

Release Notes

FutureSource 4.3

April 27, 2015

Table of Contents

1	Preface	3
2	Top New Content & Functionality	4
3	Details of New & Enhanced Functionality	5
3.1	OptionSource – Advanced Option Analytics	5
3.2	Futures Options	6
3.2.1	Multi Month Model	6
3.3	Charts	7
3.3.1	Trendline Endpoint Values	7
3.4	Grid	7
3.4.1	Disable Tooltips	7
3.4.2	Hide Scrollbars	7
3.5	Trading	7
3.5.1	OCO Chart Ornaments	7
4	Fixes	8
5	System Requirements	9
5.1	Operating System & Browser	9
5.2	Java	9
5.3	Other Requirements	9

1 Preface

This document outlines the key new features, functionality and content included in FutureSource 4.3.

All screenshots are examples for illustration purposes only. The exact layout and display may vary depending on Individual workspace customization.

The information contained in this document shall not be deemed as financial advice, consultancy or express warranty or warranty of fitness for a special purpose. Interactive Data Desktop Solutions will not be liable for any inaccuracy or incompleteness of the information or data supplied with this document.

This document contains confidential information and is provided exclusively for the information of the recipients. It may not be copied or distributed to any third party.

Release Notes Style Convention

- **Bold blue phrases** with pipe signs (|) denote a **menu** command, either from the main FutureSource drop-down navigation menu or through a contextual right-click menu in a certain window.
- **Bold black words** are used for emphasis in the text.
- Terms in quotation marks refer to a specific feature of the system.

2 Top New Content & Functionality

Some of the top enhancements of the new version include the following.

Functionality

OptionSource – Advanced Futures Options Analytics Package

OptionSource helps you manage risk in volatile commodities markets. This easy to use window allows for monitoring complex options positions and graphically viewing how strategies react to changes in market price, volatility and more.

Futures Options Window – Multi Month Mode

There is now a 3rd view added to the Futures Options Window. This view will allow you to analyze multiple months in an intuitive layout.

Content

Market Depth Expansion

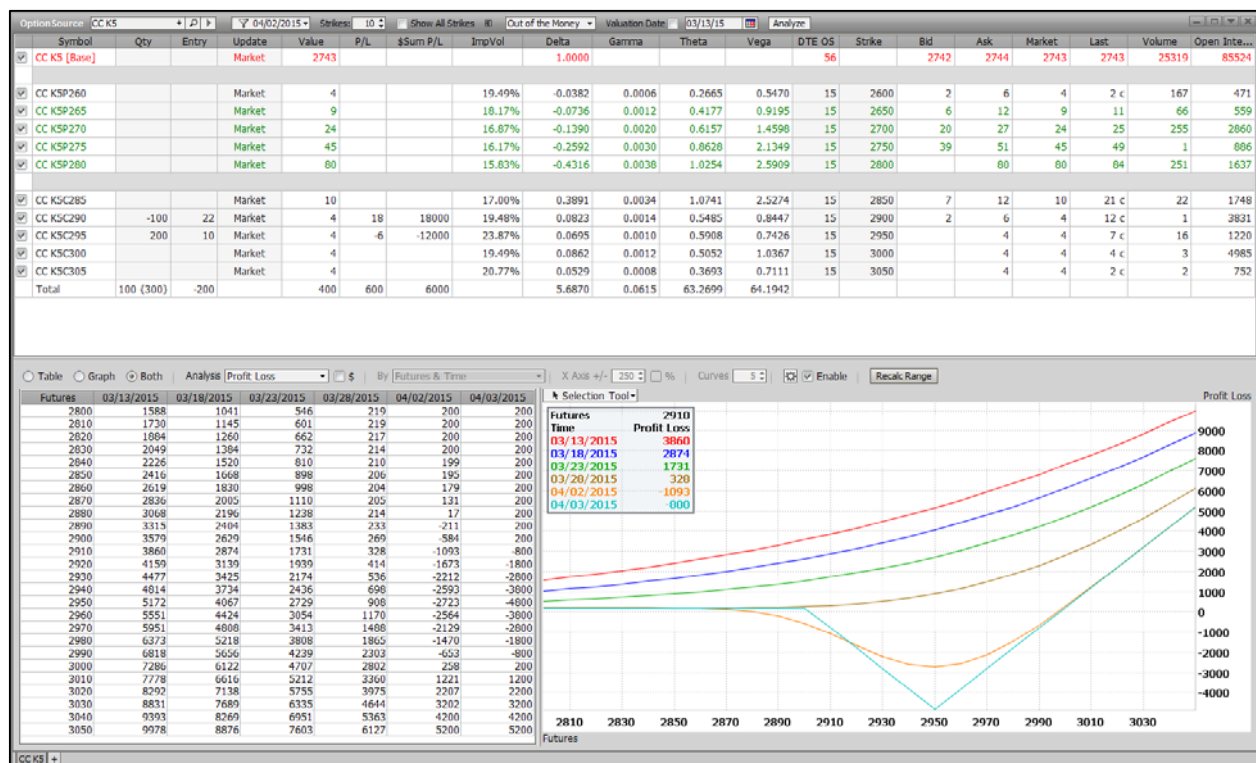
FutureSource now provides Market Depth aggregated at price and (Where available) full order book for the following exchanges: CBOE, Eurex, Moscow, MEFF, NSE Futures & Shanghai Futures.

3 Details of New & Enhanced Functionality

3.1 OptionSource – Advanced Option Analytics

OptionSource helps you **manage risk in volatile commodities markets**. This easy to use window allows for **monitoring complex options positions** and graphically viewing how strategies react to changes in market price, volatility and more.

OptionSource offers a complete set of tools designed for **analyzing an options portfolio's profit and loss potential**, as well as managing risk on the portfolio. It gives traders, brokers and analysts the ability to understand the pre-trade and post-trade risk characteristics of a portfolio and to perform “what if” scenarios to best understand the performance of a position or trading strategy under varying market conditions.



3.2 Futures Options

3.2.1 Multi Month Model

There is now a 3rd view added to the Futures Options Window. This view will allow you to analyze multiple months in an intuitive layout.

View Modes can be changed by accessing the View Mode option on the Context Menu

30 Future Options		CL MS		CL MS		CL MS		CL MS		CL MS		CL MS		CL MS		CL MS	
Sym	CL JUN 15	CL JUL 15	CL AUG 15	CL SEP 15	CL OCT 15	CL NOV 15	CL DEC 15	CL JAN 16	CL FEB 16	CL MAR 16	CL APR 16	CL MAY 16	CL JUN 16	CL JUL 16	CL AUG 16	CL SEP 16	CL OCT 16
Dsc	CL JUN 15	CL JUL 15	CL AUG 15	CL SEP 15	CL OCT 15	CL NOV 15	CL DEC 15	CL JAN 16	CL FEB 16	CL MAR 16	CL APR 16	CL MAY 16	CL JUN 16	CL JUL 16	CL AUG 16	CL SEP 16	CL OCT 16
L	57.75	58.96	59.65	60.11	60.50	60.92	61.34	61.76	62.18	62.60	63.02	63.44	63.86	64.28	64.70	65.12	65.54
Chg	+0.44	+0.49	+0.51	+0.55	+0.58	+0.61	+0.64	+0.67	+0.70	+0.73	+0.76	+0.79	+0.82	+0.85	+0.88	+0.91	+0.94
OTE	29	63	92	122	155	183	211	239	267	295	323	351	379	407	435	463	491
Exp	05/19/15	06/22/15	07/21/15	08/20/15	09/22/15	10/20/15	11/17/15	12/15/15	01/13/16	02/10/16	03/09/16	04/06/16	05/04/16	06/01/16	06/29/16	07/27/16	08/24/16
V	259K	82.4K	34.9K	35.2K	15.4K	8.17K	4.17K	2.17K	1.17K	0.67K	0.37K	0.17K	0.07K	0.02K	0.01K	0.01K	0.01K
OI	430515	226740	77321	147787	82540	52151	31151	18151	10151	5151	2151	1151	6151	3151	1151	6151	3151
05/14/15		06/17/15		07/16/15		08/17/15		09/17/15		10/15/15							
Strike	Last	Net Change	Last	Net Change	Last	Net Change	Last	Net Change	Last	Net Change	Last	Net Change	Last	Net Change	Last	Net Change	Last
50.5	7.81	+0.46	0.43	-0.10													
51.0	7.36	+0.44	0.48	-0.12													
51.5	6.92	+0.43	0.54	-0.13	8.72	+0.43	1.17	-0.15									
52.0	6.48	+0.42	0.61	-0.13	8.32	+0.43	1.29	-0.14									
52.5	6.06	+0.41	0.71	-0.12	7.92	+0.42	1.37	-0.17	9.02	+0.43	1.77	-0.10					
53.0	5.65	+0.40	0.80	-0.13	7.53	+0.41	1.48	-0.17	8.64	+0.42	1.90	-0.18					
53.5	5.25	+0.39	0.91	-0.14	7.14	+0.40	1.60	-0.18	8.27	+0.41	2.02	-0.20	9.14	+0.46	2.43	-0.19	9.88
54.0	4.86	+0.37	0.99	-0.16	6.77	+0.39	1.74	-0.17	7.91	+0.41	2.16	-0.20	8.78	+0.45	2.57	-0.20	9.10 c
54.5	4.48	+0.36	1.12	-0.18	6.40	+0.38	1.85	-0.20	7.55	+0.40	2.30	-0.21	8.43	+0.45	2.72	-0.21	8.78 c
55.0	3.94	+0.17	1.28	-0.17	6.04	+0.37	1.99	-0.21	7.20	+0.39	2.52	-0.15	8.09	+0.44	2.87	-0.22	8.83
55.5	3.77	+0.34	1.39	-0.22	5.70	+0.36	2.15	-0.22	6.85	+0.38	2.61	-0.23	7.75	+0.43	3.03	-0.23	8.10 c
56.0	3.43	+0.32	1.55	-0.24	5.36	+0.35	2.31	-0.23	6.52	+0.37	2.77	-0.24	7.41	+0.42	3.20	-0.24	8.15
56.5	3.11	+0.31	1.79	-0.19	5.04	+0.35	2.49	-0.23	6.19	+0.36	2.94	-0.25	7.09	+0.41	3.37	-0.25	7.82
57.0	2.81	+0.30	1.93	-0.26	4.72	+0.34	2.67	-0.24	5.87	+0.35	3.12	-0.26	6.77	+0.40	3.55	-0.26	7.15 c
57.5	2.52	+0.29	2.14	-0.28	4.42	+0.33	2.87	-0.25	5.56	+0.35	3.31	-0.26	6.46	+0.39	3.74	-0.27	7.20
58.0	2.17	+0.17	2.40	-0.28	4.12	+0.32	3.07	-0.26	5.25	+0.33	3.50	-0.28	6.15	+0.38	3.93	-0.28	6.90
58.5	2.01	+0.24	2.63	-0.32	3.84	+0.32	3.29	-0.29	4.96	+0.33	3.71	-0.28	5.85	+0.37	4.14	-0.29	6.61
59.0	1.78	+0.22	2.90	-0.34	3.56	+0.29	3.51	-0.29	4.67	+0.31	3.92	-0.30	5.56	+0.36	4.35	-0.29	6.32
59.5	1.46	+0.09	3.19	-0.36	3.30	+0.27	3.75	-0.31	4.39	+0.29	4.61 c	-0.33	5.20	+0.35	4.56	-0.31	5.73 c
60.0	1.30	+0.11	3.49	-0.38	2.98	+0.16	4.01	-0.32	4.05	+0.20	4.38	-0.33	5.01	+0.33	4.79	-0.33	5.77
60.5	1.19	+0.15	3.81	-0.41	2.82	+0.24	4.27	-0.34	3.79 c	+0.32	5.03	-0.34	5.21 c	+0.32	5.03	-0.34	5.21 c
61.0	0.98	+0.07	4.16	-0.42	2.60	+0.23	4.55	-0.35	3.64	+0.26	4.89	-0.35	4.50	+0.31	5.28	-0.35	5.24
61.5	0.90	+0.12	4.52	-0.44	2.38	+0.21	4.83	-0.37	3.41	+0.09	5.68 c	-0.35	4.27	+0.31	5.54	-0.36	4.73 c
62.0	0.74	+0.06	4.89	-0.47	2.18	+0.20	5.13	-0.38	3.19	+0.24	5.44	-0.37	4.03	+0.29	5.81	-0.37	4.75
62.5	0.62	+0.04	5.28	-0.48	2.00	+0.19	5.45	-0.38	2.98	+0.23	5.72	-0.39	3.81	+0.28	6.09	-0.38	4.29 c
63.0	0.54	+0.04	5.68	-0.50	1.84	+0.20	6.35 c	-0.39	2.77	+0.21	6.02	-0.39	3.59	+0.27	6.37	-0.39	4.28
63.5	0.48	+0.05	6.72 c		1.68	+0.10	6.70 c		2.58	+0.21	6.90 c		3.39	+0.27	7.21 c		4.06
64.0	0.40	+0.03	6.53	-0.52	1.53	+0.16	6.48	-0.47	2.39	+0.19	6.64	-0.41	3.19	+0.26	6.96	-0.41	3.84
64.5	0.36	+0.04	6.97	-0.53	1.40	+0.15	7.44 c		2.21	+0.17	7.57 c		2.99	+0.24	7.83 c		3.49 c
65.0	0.29	+0.02	7.42	-0.53	1.27	+0.13	7.22	-0.45	2.06	+0.16	7.31	-0.44	2.81	+0.23	7.59	-0.43	3.45
65.5					1.15	+0.11	8.21 c		1.91	+0.15	8.77 c		2.64	+0.21	8.49 c		3.27
66.0					1.04	+0.10	8.01 c		1.78	+0.15	8.94 c		2.49	+0.21	8.84 c		3.09
66.5									1.65	+0.14	9.01 c		2.32	+0.19	9.20 c		2.80 c
67.0									1.52	+0.13	9.39 c		2.18	+0.19	9.56 c		2.65 c
67.5													2.04	+0.18	9.93 c		2.61
68.0																	

3.3 Charts

New areas of functionality have been added to the Chart window, they include:

- Trendline Endpoint Values

3.3.1 Trendline Endpoint Values

Users can now display the pricing information for the end points of the trendline. This is done by selecting Display Prices from the trendline Chart Object Properties.

3.4 Grid

New areas of functionality have been added to the Grid, they include:

- Ability to disable tooltips
- Ability to hide the scrollbar

3.4.1 Disable Tooltips

Users can now disable the display of the formula tooltips within the Grid. This option is now available in the Table Section of the Grid Display Properties.

3.4.2 Hide Scrollbars

Users can now hide the scrollbar within the Grid Window. This option is now available in the Table Section of the Grid Display Properties.

3.5 Trading

New areas of functionality have been added to integrated trading, they include:

- OCO added to Chart Ornaments

3.5.1 OCO Chart Ornaments

OCO's are now displayed within the Chart Ornaments.

4 Fixes

The Following fixes and performance enhancements are included in FutureSource Web 4.3:

- **Chart**
 - 36993 – Autoscale activated by default
 - 35629 – Position placement of first point in line
- **Grid**
 - 34176 – Cut cell pasted to incorrect position
 - 34136 – Exception using Date Function
 - 35514 – Fixed issue with relative referencing
 - 31621 – Fixed issue with formatting
 - 33924 – Focus issue with Grid Window
 - 33826 – Date function with External Data
- **Framework**
 - 36511 – Support for constant values in Expression Shortcuts
- **News**
 - 35176 – Selected filter not always displayed
- **Trading**
 - 37097 – Account Manager has full context menu
 - 37426 – Account Manager performance improvements
 - 36143 – Add options duplicated when copying an order
 - 37258 – Change trading notes when modifying order

5 System Requirements

5.1 Operating System & Browser

- Windows Vista , W7 or Windows 8
- Internet Explorer 6 or higher, Mozilla Firefox 3 or higher, Apple Safari for Windows 3.2 or higher
- Google Chrome is unofficially supported at present

5.2 Java

- Minimum: Java Version 1.5
- Recommended: Java Version 1.6.10 or **Greater**
 - NOTE: Issue with Java Versions 1.6.24 to 1.6.25 have been detected on some isolated client systems.

5.3 Other Requirements

- Cookies Enabled
- Pop-Up Blocker Disabled for Login.FutureSource.com URL