

Release Notes

## **FutureSource Release 3.6**

Date: June 28, 2013

# 1 Preface

This document outlines the key new features, functionality and content included in FutureSource release 3.6.

All screenshots are examples for illustration purposes only. The exact layout and display may vary depending on a firm's specific workspace.

The information contained in this document shall not be deemed as financial advice, consultancy or express warranty or warranty of fitness for a special purpose. Interactive Data Desktop Solutions will not be liable for any inaccuracy or incompleteness of the information or data supplied with this document.

This document contains confidential information and is provided exclusively for the information of the recipients. It may not be copied or distributed to any third party.

## Release Notes Style Convention:

- Bolded phrases with pipe signs (|) denote a menu command, either from the main FutureSource drop-down navigation menu or through a contextual right-click menu in a certain window.
- Terms in quotation marks refer to a specific feature of the system.

## 2 Summary of New and Enhanced Features

The top enhancements of the new version of FutureSource include the following. Specific details on each one of these items are included in Section 3 of these Release Notes.

### Content

- Argus Media Data Sets
- OPIS Feedstocks, North American LP's, Spots & RINS (Non-Rack)
- Canadian Long Forwards

### Functionality

- Tree structure symbol search – Expanded nesting of Exchange groups
- “Magnifying Glass” for Symbol Search in Windows
- Symbol Linking
- Import / Export Expression Shortcuts
- Implied Volatility on Charts
- Apply Chart Template to an Existing Chart
- Description supported on Charts
- VWAP Calculator
- Select and import .xlsx Excel files as external data
- Detailed Quote (New Window)
- OptionWorks -- Now supports Euronext Commodities (cocoa, wheat and sugar)
- Ability to Highlight and Set Colors for DJ Headlines
- Support "Recent" field for Expressions and Functions
- Add Historic Volatility Study to Data Table Studies
- “Snap to Chart Values” defaulted to “On”
- New RTD/Excel Add-in

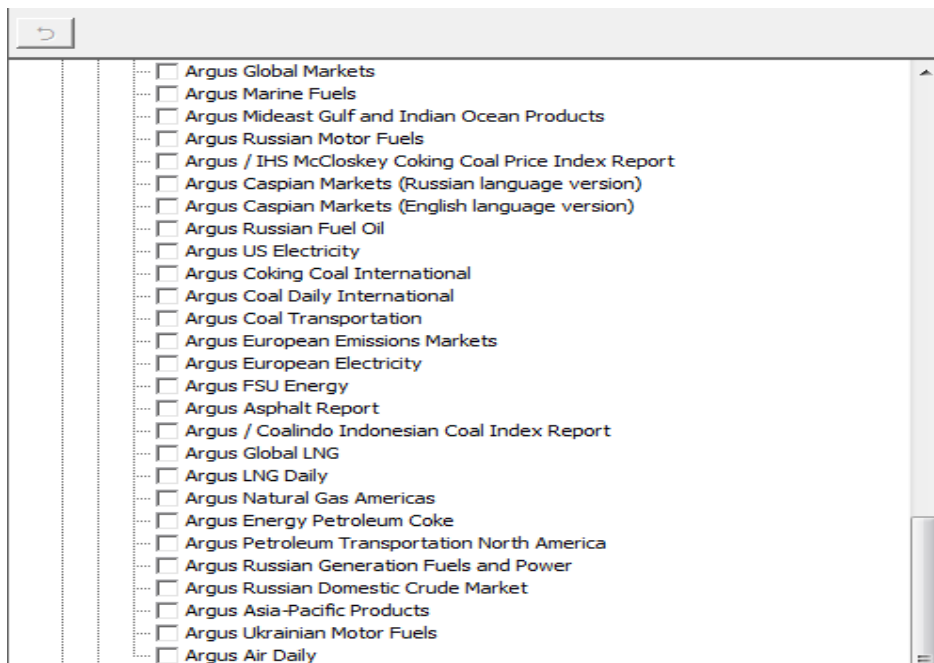
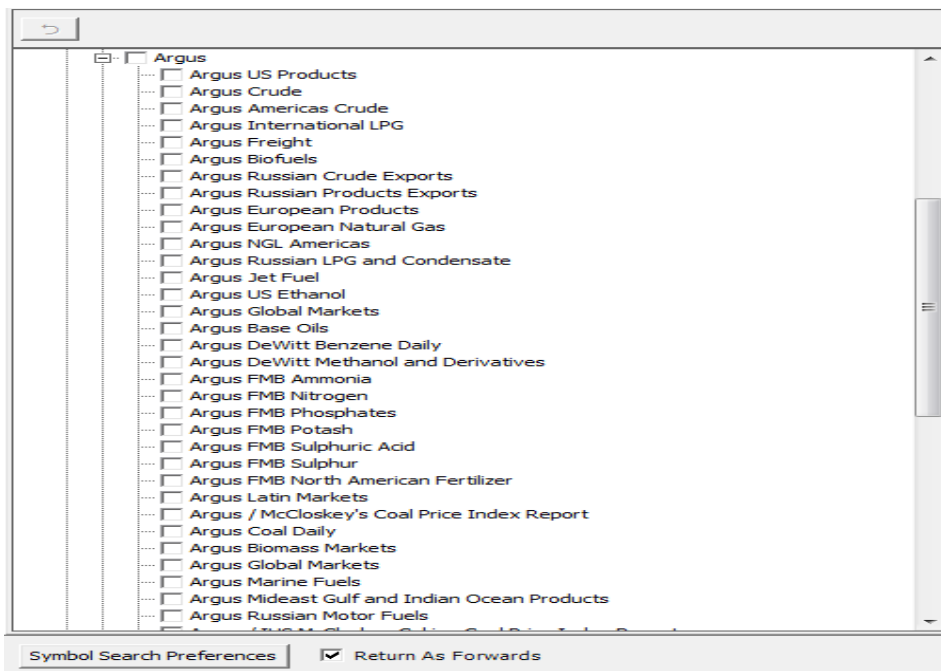
## 3 Details of New & Enhanced Content/Functionality

### 3.1 Content

#### 3.1.1 Argus Media Data Sets (Fee Liable)

The Argus Media content set represents assessments and news that reflects real trading in the global energy and commodities markets. Argus produces detailed, exclusive information and price assessments for the energy and commodity markets, covering crude and petroleum products, natural gas and LNG, electricity, coal, emissions, biomass, biofuels, fertilizers and transportation. Many Argus assessments are considered benchmarks and are used extensively by traders in the global energy and commodities markets. In general, the Argus prices are used in conjunction with Platts price assessments to price physical and OTC transactions.

Argus News and PDF services will be available in FutureSource within four to six weeks.



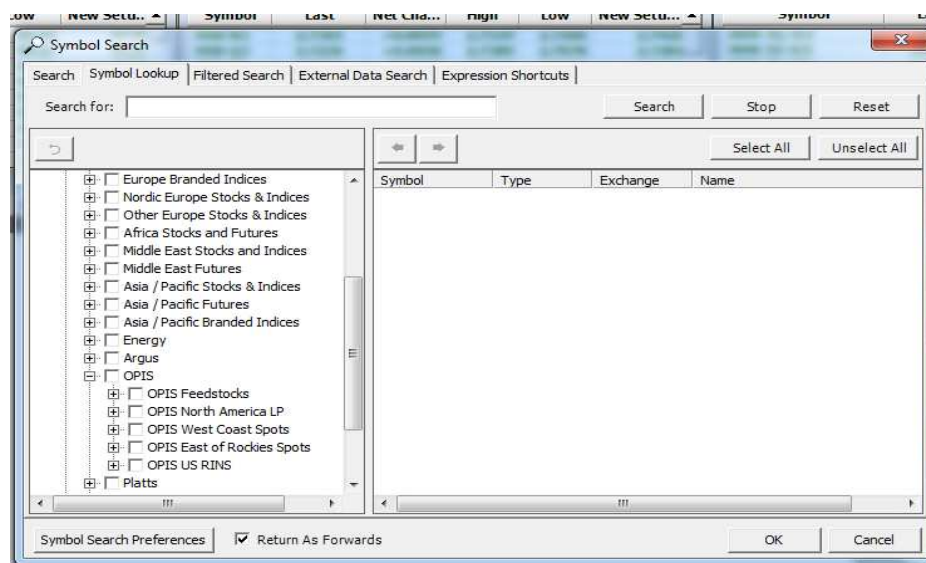
The symbol extension for the Argus prices is "-ARG".

This data requires customers to have a subscription with Argus in order to be viewed in FutureSource. 30 day free trials are available with the pre-approval of Argus Media.

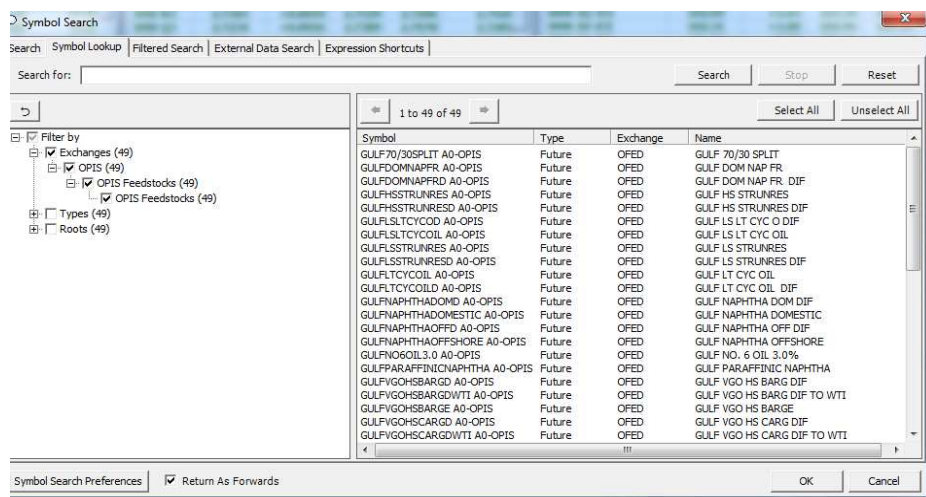
For additional information on Argus Data, News and PDF services click [here](#).

### 3.1.2 OPIS (Non-Rack) (Fee Liabile)

FutureSource users will now be able to view OPIS Feedstock, LPG, Spot Prices and RINS. OPIS spot gasoline, diesel and jet fuel prices are highly benchmarked in the U.S. West Coast and other key markets. OPIS's refinery feedstocks and LPG prices are also considered a preferred benchmark by many U.S. and international traders. Time-series history dating back to January 1, 2012 is available in FutureSource for all OPIS spot prices.



The symbol extension is “-OPIS”.



A subscription agreement with OPIS is required to view the data. Thirty day free trials are available with the pre-approval of OPIS.

For more information on OPIS Data and Commentary, please click [here](#).

### 3.1.3 Canadian FX Long Forwards

Canadian FX Long Forward data going out 10 years is now available in FutureSource from Cougar Capital. These quotes are represented as both Out-right quotes and Percentage in Points (PIPs).

Symbol	Description	Company Name	Bid	Ask	High	Low	Last	Time
CAD Y2-FX	FOREX FORWARD RATE	CANADIAN DOLLAR	195.00	203.00		195.00	195.00	6:00 PM
CAD@CM1 Y8-FX	CANADA DOLLAR	CANADIAN DOLLAR/USDOLLAR	246	335		246	246	6:00 PM
CAD@CCM1 Y8-FX	CANADA DOLLAR	CANADIAN DOLLAR/USDOLLAR	1.04979	1.04984		1.04979	1.04979	6:00 PM
CAD@CCM1 M1-FX	CANADA DOLLAR	CANADIAN DOLLAR/USDOLLAR	8.15	8.44		8.15	8.15	6:00 PM
CAD@CCM1 M3-FX	CANADA DOLLAR	CANADIAN DOLLAR/USDOLLAR	88.20	89.80		88.20	88.20	6:00 PM
CAD@CCM1 M6-FX	CANADA DOLLAR	CANADIAN DOLLAR/USDOLLAR	15.65	16.24		15.65	15.65	6:00 PM
CAD@CCM1 Y2-FX	CANADA DOLLAR	CANADIAN DOLLAR/USDOLLAR	46.20	47.00		46.20	46.20	6:00 PM
CAD@CCM1 Y5-FX	CANADA DOLLAR	CANADIAN DOLLAR/USDOLLAR	143.00	150.00		143.00	143.00	6:00 PM
CAD@CCM1 A2-FX	CANADA DOLLAR	CANADIAN DOLLAR/USDOLLAR	1.00	1.03		1.00	1.00	6:00 PM
CAD@CCM1 A1-FX	CANADA DOLLAR	CANADIAN DOLLAR/USDOLLAR	0.24	0.34		0.24	0.24	6:00 PM
CAD@CCM1 W3-FX	CANADA DOLLAR	CANADIAN DOLLAR/USDOLLAR	60.00	64.73		60.00	60.00	6:00 PM
CAD@CCM1 W3-FX	CANADA DOLLAR	CANADIAN DOLLAR/USDOLLAR	5.30	5.77		5.30	5.30	6:00 PM
CAD@CCM1 N0-FX	CANADA DOLLAR	CANADIAN DOLLAR/USDOLLAR	75.50	78.80		75.50	75.50	6:00 PM
CAD@CCM1 N1-FX	CANADA DOLLAR	CANADIAN DOLLAR/USDOLLAR	83.20	86.20		83.20	83.20	6:00 PM
CAD@CCM1 A3-FX	CANADA DOLLAR	CANADIAN DOLLAR/USDOLLAR	1.00	1.07		1.00	1.00	6:00 PM
CAD@CCM1 M7-FX	CANADA DOLLAR	CANADIAN DOLLAR/USDOLLAR	53.00	55.21		53.00	53.00	6:00 PM
CAD@CCM1 M4-FX	CANADA DOLLAR	CANADIAN DOLLAR/USDOLLAR	23.50	24.39		23.50	23.50	6:00 PM
CAD@CCM1 Y2-FX	CANADA DOLLAR	CANADIAN DOLLAR/USDOLLAR	195.00	203.00		195.00	195.00	6:00 PM
CAD@CCM1 Y5-FX	CANADA DOLLAR	CANADIAN DOLLAR/USDOLLAR	52.00	55.00		52.00	52.00	6:00 PM
CAD@CCM1 Y3-FX	CANADA DOLLAR	CANADIAN DOLLAR/USDOLLAR	277.0	302.0		277.0	277.0	6:00 PM
CAD@CCM1 N5-FX	CANADA DOLLAR	CANADIAN DOLLAR/USDOLLAR	119.00	125.00		119.00	119.00	6:00 PM
CAD@CCM1 Y8-FX	CANADA DOLLAR	CANADIAN DOLLAR/USDOLLAR	227	267		227	227	6:00 PM
CAD@CCM1 Y8-FX	CANADA DOLLAR	CANADIAN DOLLAR/USDOLLAR	190	280		190	190	6:00 PM
CAD@CCM1 Y7-FX	CANADA DOLLAR	CANADIAN DOLLAR/USDOLLAR	255	305		255	255	6:00 PM
CAD@CCM1 Y6-FX	CANADA DOLLAR	CANADIAN DOLLAR/USDOLLAR	320.0	355.0		320.0	320.0	6:00 PM
CAD@CCM1 Y6-FX	CANADA DOLLAR	CANADIAN DOLLAR/USDOLLAR	293	338		293	293	6:00 PM
CAD@CCM1 Z0-FX	CANADA DOLLAR	CANADIAN DOLLAR/USDOLLAR	205	295		205	205	6:00 PM
CAD@CCM1 O14-FX	CANADA DOLLAR	CANADIAN DOLLAR/USDOLLAR	1.0799	1.0839		1.0799	1.0799	6:00 PM
CAD@CCM1 O2-FX	CANADA DOLLAR	CANADIAN DOLLAR/USDOLLAR	1.048000	1.048503		1.048000	1.048000	6:00 PM
CAD@CCM1 O19-FX	CANADA DOLLAR	CANADIAN DOLLAR/USDOLLAR	1.053200	1.053921		1.053200	1.053200	6:00 PM
CAD@CCM1 O11-FX	CANADA DOLLAR	CANADIAN DOLLAR/USDOLLAR	1.057200	1.057900		1.057200	1.057200	6:00 PM
CAD@CCM1 O11-FX	CANADA DOLLAR	CANADIAN DOLLAR/USDOLLAR	1.06740	1.06870		1.06740	1.06740	6:00 PM
CAD@CCM1 O19-FX	CANADA DOLLAR	CANADIAN DOLLAR/USDOLLAR	1.0669	1.0764		1.0669	1.0669	6:00 PM
CAD@CCM1 O13-FX	CANADA DOLLAR	CANADIAN DOLLAR/USDOLLAR	1.050250	1.050839		1.050250	1.050250	6:00 PM
CAD@CCM1 O11-FX	CANADA DOLLAR	CANADIAN DOLLAR/USDOLLAR	1.058220	1.058700		1.058220	1.058220	6:00 PM
CAD@CCM1 O13-FX	CANADA DOLLAR	CANADIAN DOLLAR/USDOLLAR	1.048000	1.048507		1.048000	1.048000	6:00 PM
CAD@CCM1 O18-FX	CANADA DOLLAR	CANADIAN DOLLAR/USDOLLAR	1.062200	1.063400		1.062200	1.062200	6:00 PM
CAD@CCM1 O11-FX	CANADA DOLLAR	CANADIAN DOLLAR/USDOLLAR	1.047924	1.048434		1.047924	1.047924	6:00 PM

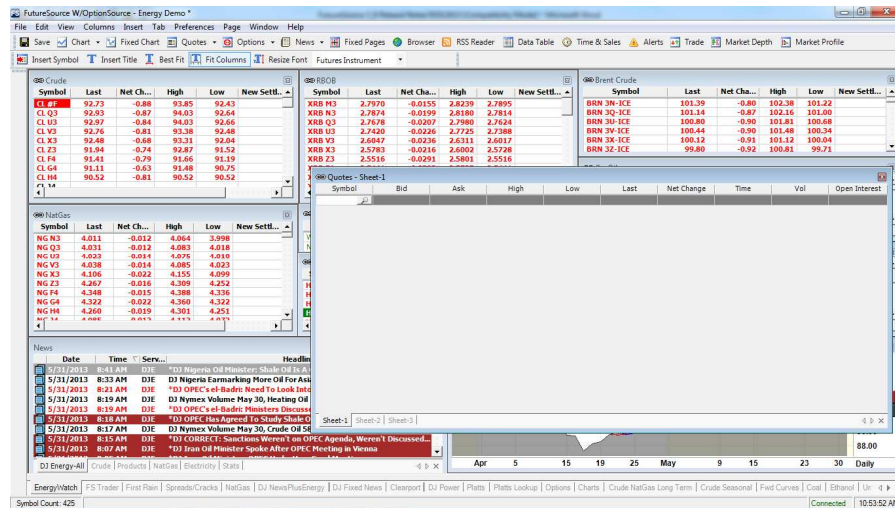
## 3.2 Functionality

### 3.2.1 Tree Structure Symbol Searching

FutureSource 3.5 introduced new symbol look-up capabilities. This new symbol look-up gives users the ability to select "Symbol Look-up" from the Symbol Search dialogue box available from the Quote Board, Quote Grid, Chart and Data Table displays. FutureSource 3.6 expands the number of branches within the Exchange branch to make it easier to find the new Energy content.

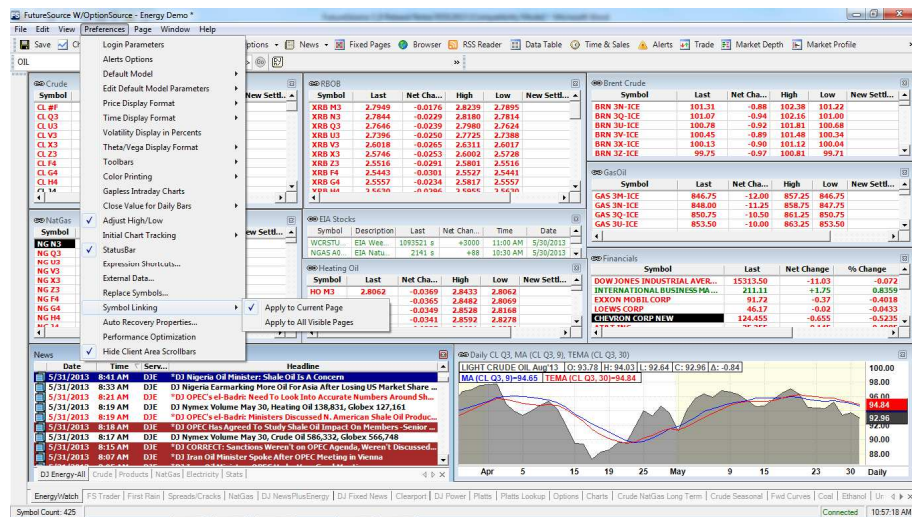
### 3.2.2 “Magnifying Glass” for Symbol Search in Windows

A new Magnifying Glass icon replaces the “...” for symbol look-up. It is available in all FutureSource windows including Quote Window, Quote Board, Quote Grid, Chart and Data Table displays.

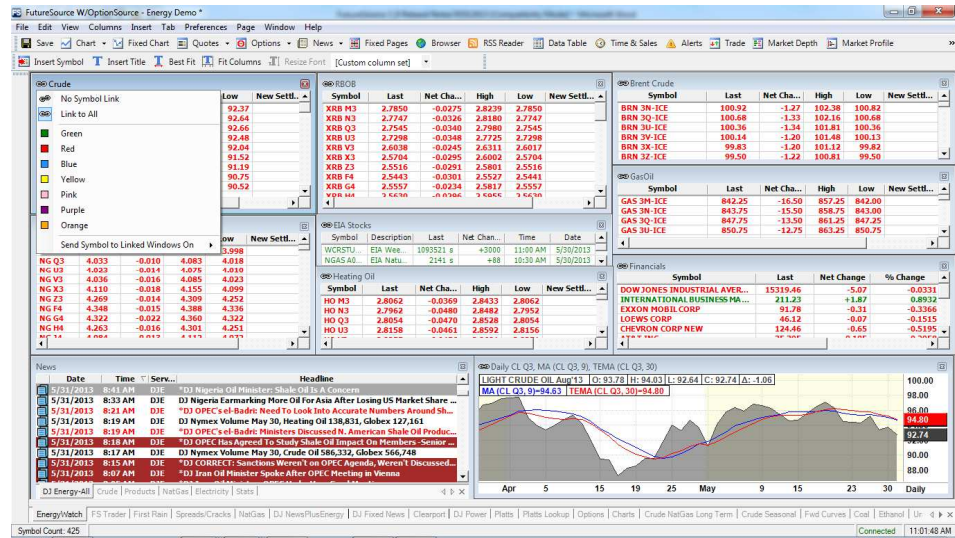


### 3.2.3 Symbol Linking

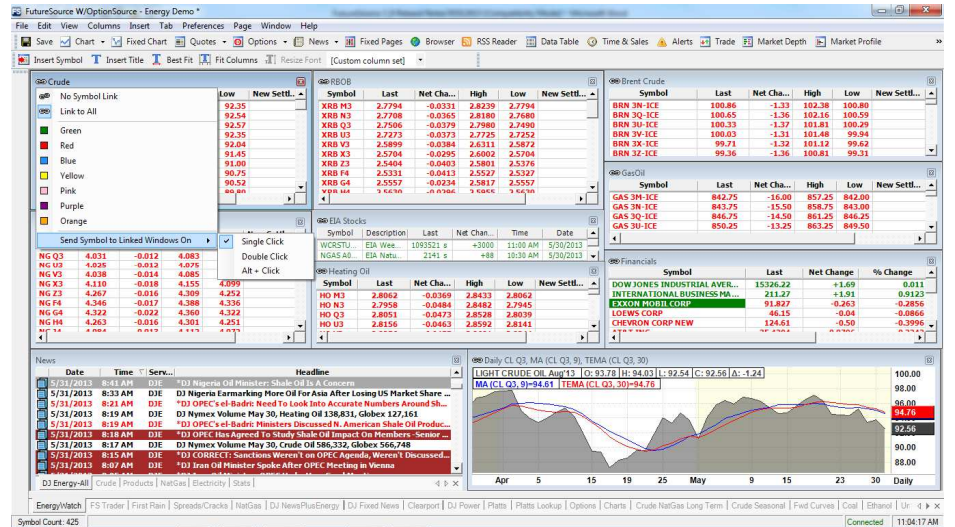
FutureSource 3.6 now allows a user to link symbols to different window displays such as symbol in a Quote Window to Chart, Market Depth, Option Board, Data Table and Time & Sales display. From the |Preferences| drop down, you can select whether to apply Symbol Linking to the existing page or to all visible pages.



To link Symbols from a Window, click on the Symbol Link icon on the upper left corner of the window where you will see the following options.



From here you can control whether or not to link Windows or not. If you choose to link Windows, you can control how the Window will be linked. The default symbol link between Windows is “Single Click”. You can also link symbols in Windows by an “ALT+Click” or a “Double Click”.

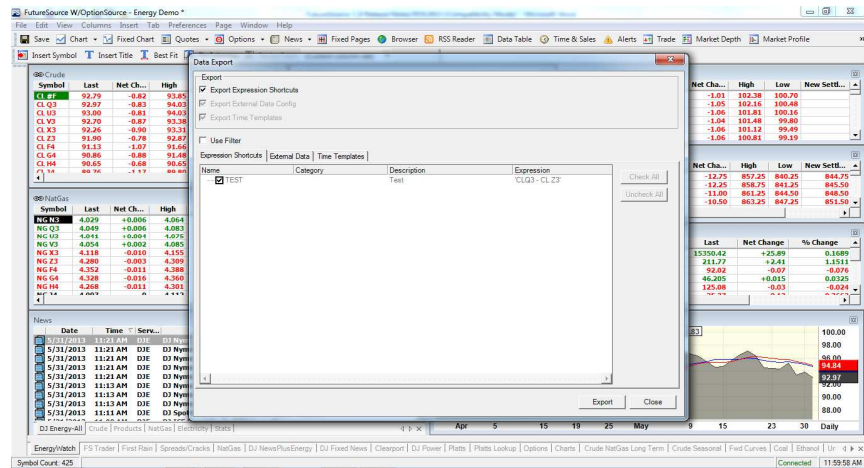
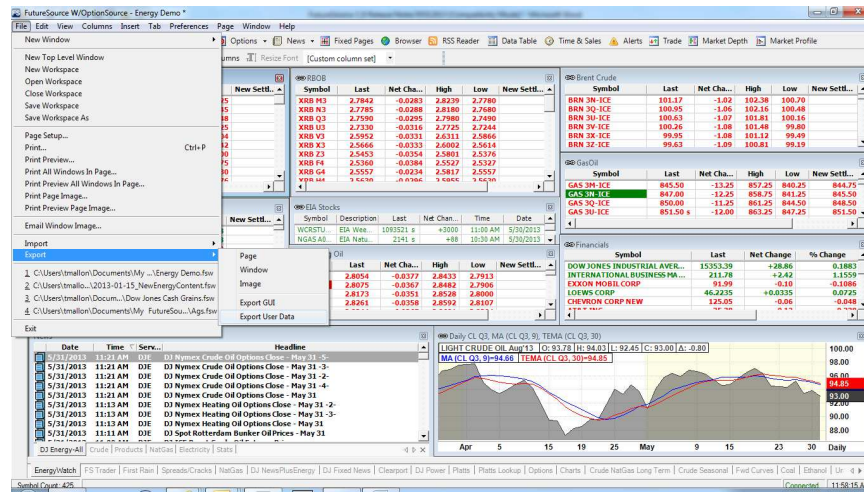


In the above example, the symbols in Quote Windows are linked to the Chart Window via a “Single Click” meaning when a symbol in the Quote Window is “Clicked” on, a Chart for that symbol will appear in the Chart Window.

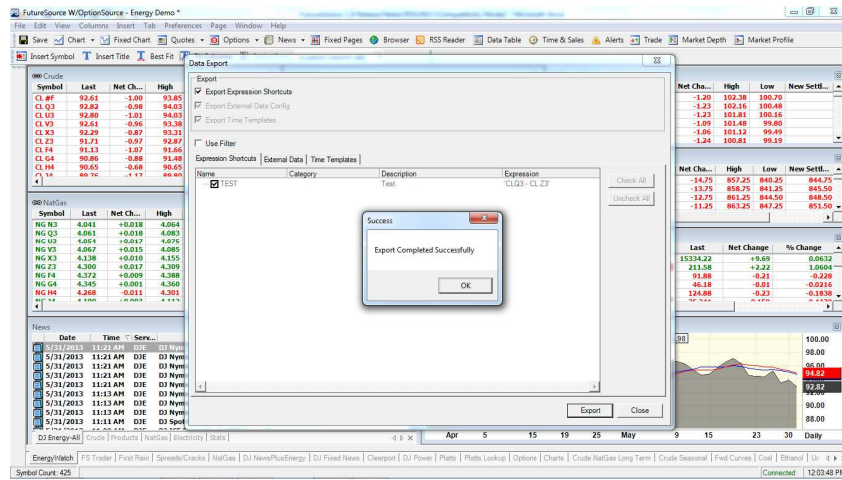


### 3.2.4 Import/Export Expression Short Cuts, External Data & Time Templates

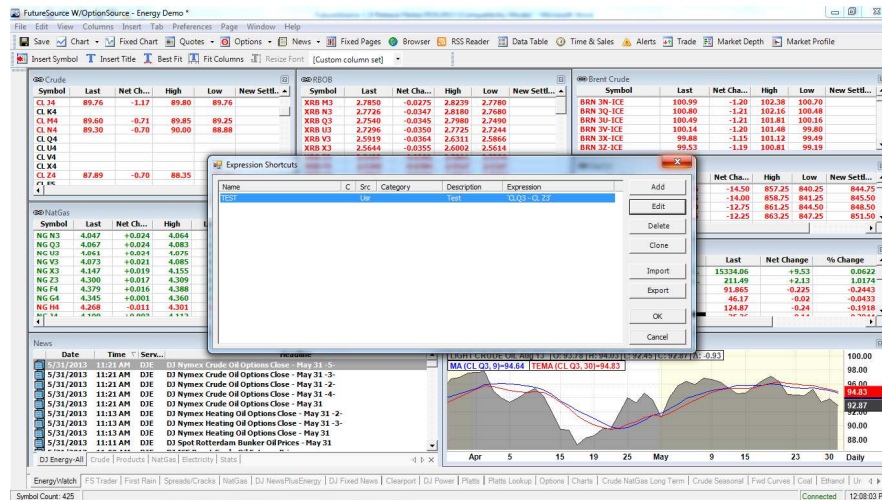
With FutureSource 3.6 you can now Import/Export Expression Short Cuts, External Data and Time Templates. To Export, select |File| from the Main Toolbar and click Export and select “Export User Data” from the drop down menu.



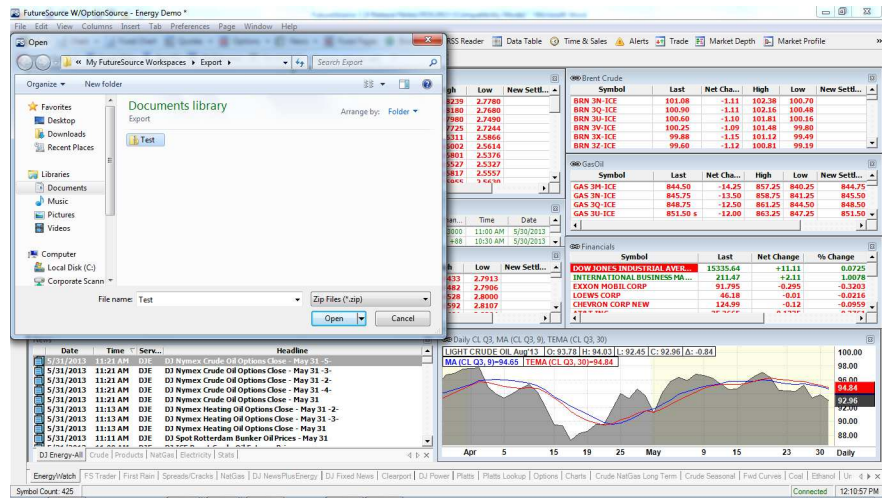
Select the Expressions, External Data or Time Templates you wish to Export and then Select “Export”. The Expressions will be saved as a “.zip” file in the location that you specify.



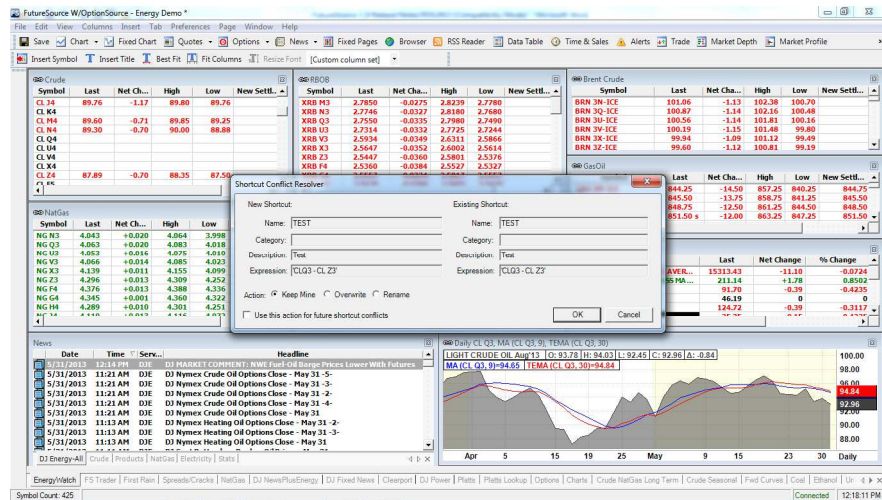
You can also Export Expression Short Cuts by selecting [Preferences] from the main tool bar and clicking on “Expression Short Cuts” from the drop down menu and clicking “Export”.



To Import Expression Shortcuts, select [File] from the Main Toolbar and click Import and select “Import User Data” from the drop down menu. Choose the location and “.zip” file for the Expression and select “Open”. At the next dialogue box, select “Import”.



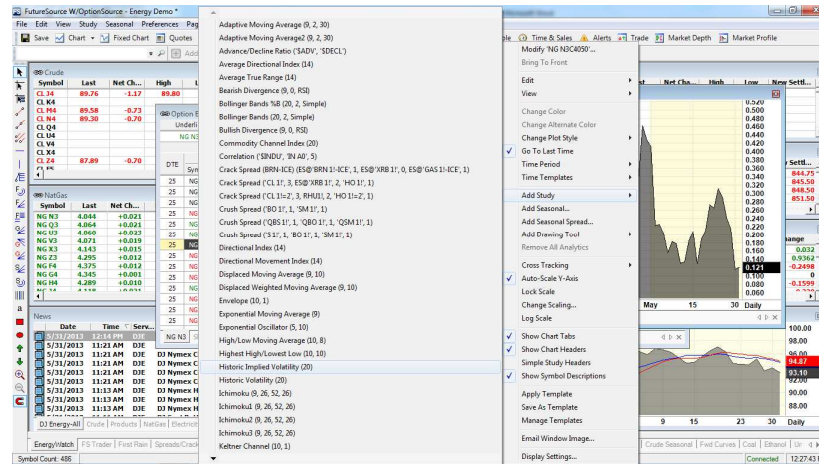
If a file already exists, you can resolve the conflict by keeping the existing file, over writing the existing file or renaming the file you wish to import.



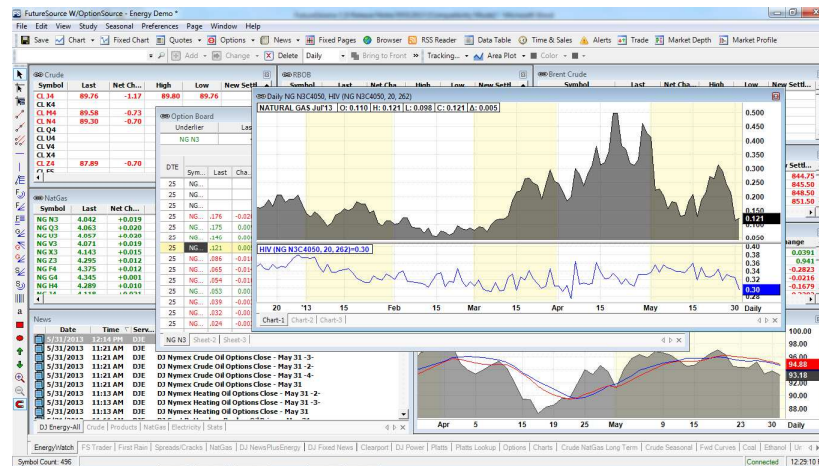
You can also Import Expression Short Cuts by selecting [Preferences] from the main tool bar and clicking on "Expression Short Cuts" from the drop down menu and clicking "Import".

### 3.2.5 Historical Implied Volatility Study in Charts

In FutureSource 3.5, we added a Historical Implied Volatility function in OptionSource. In FutureSource 3.6, Historical Implied Volatility now exists as a study in the Chart Window so a user can compare the Historical Implied Volatility to the Historic Volatility of an underlying instrument. To add the study, “Right Click” from a Chart of an Option Instrument and select “Add Study”.

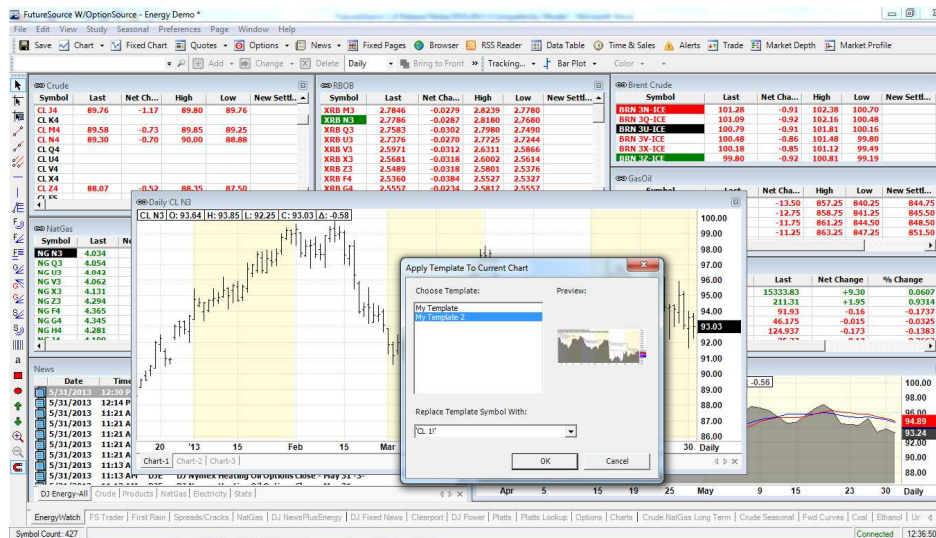
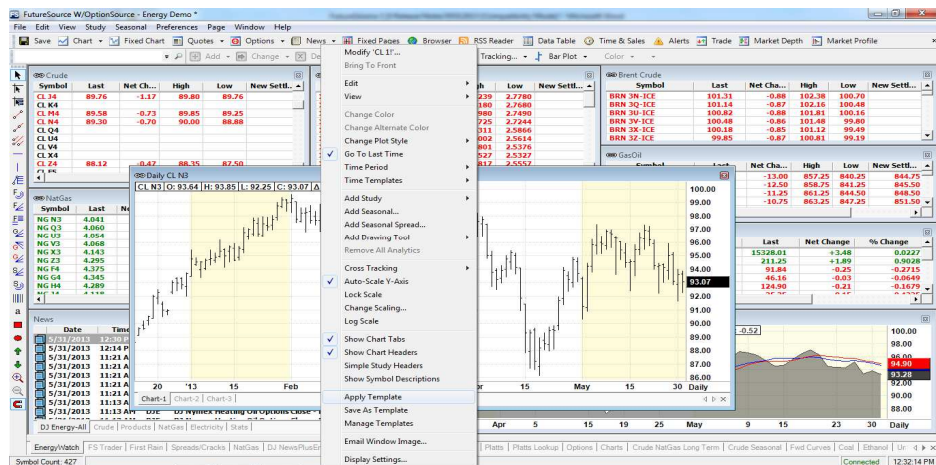


Select “Historic Implied Volatility” to add the study to the Chart.

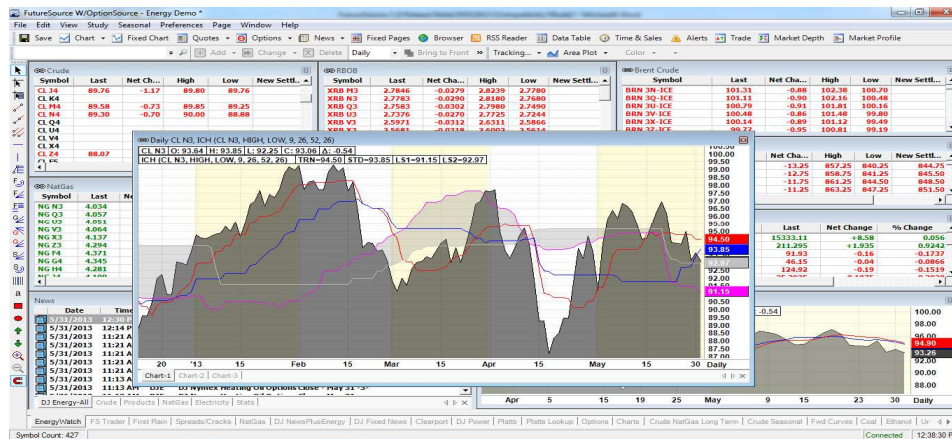


### 3.2.6 Apply Chart Template to an Existing Chart

With FutureSource 3.6, you can now apply a saved Chart Template to an existing Chart. From a Chart Window, “Right Click” and select “Apply Template”. This will allow you to select previously saved Chart Templates to your Chart.

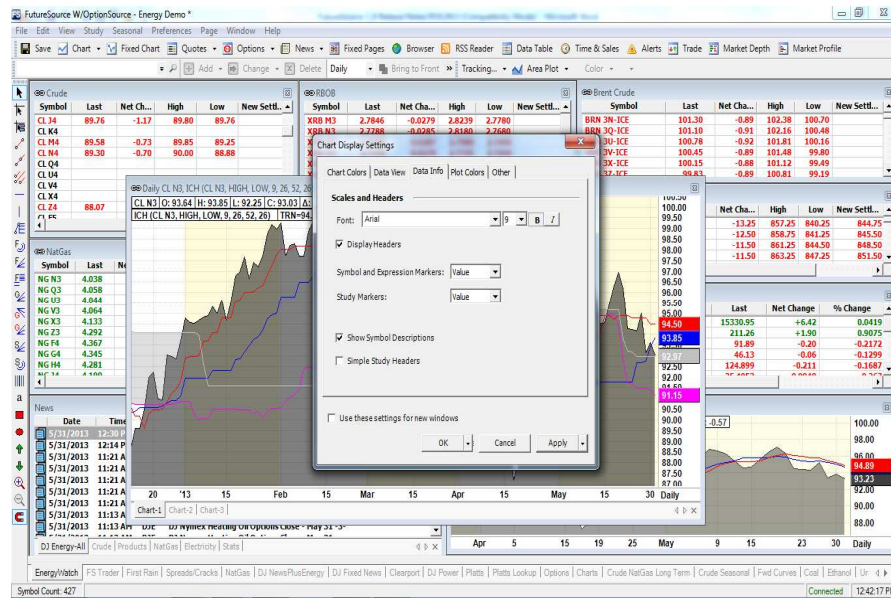


Select the saved Template you wish to apply and click “OK” to apply the template to the chart.

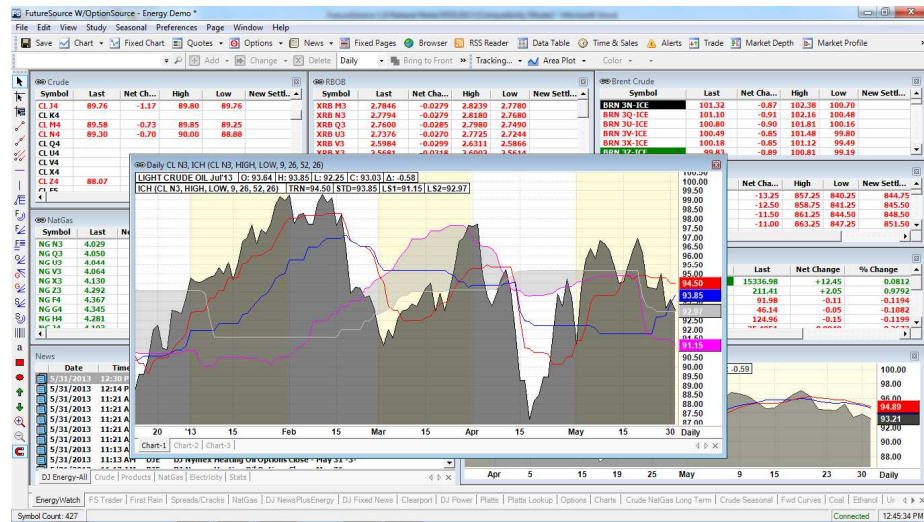


### 3.2.7 Descriptions Supported in Charts

FutureSource 3.6 now enables you to see the symbol description of an instrument in the Chart where previously you could only see the symbol. To add the description to the chart, “Right Click” on the Chart and select Display Setting. Select the “Data Info” tab and click the “Show Symbol Description” radial button.

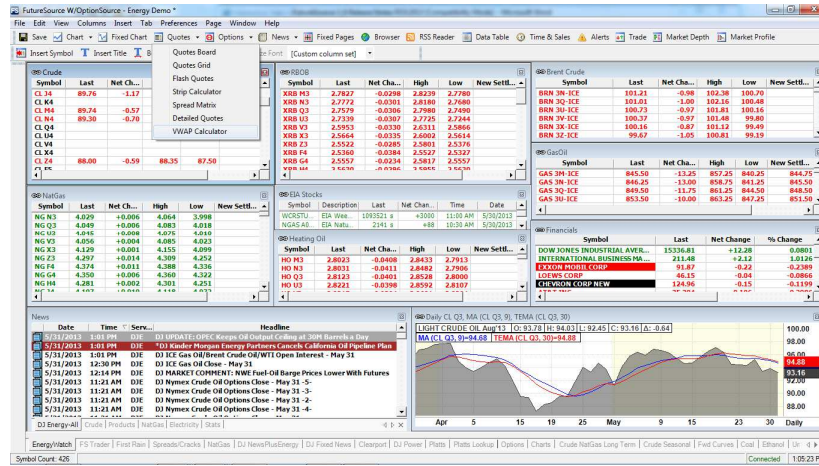


Click “Apply” and “OK” and the symbol description will appear in the Chart.

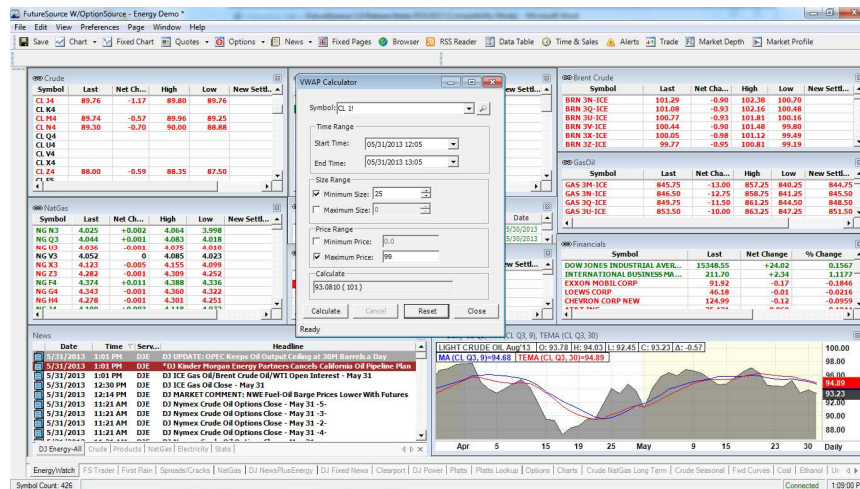


### 3.2.8 VWAP Calculator

FutureSource Release 3.6 introduces a new Volume Weighted Average Price (VWAP) Calculator. The VWAP calculator is available from the |Quote| drop down off the main toolbar.



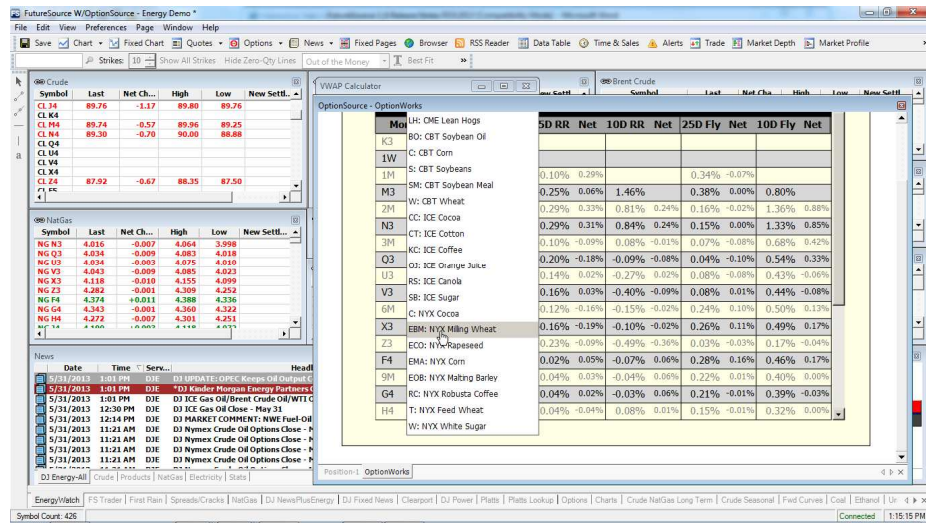
Select “VWAP Calculator” and the Calculator will appear.



Enter a symbol, select a “Time Range”, “Size Range” (Optional) and/or a “Price Range” (Optional) and select “Calculate”. The VWAP along with the number trades included in the calculation will then be displayed.

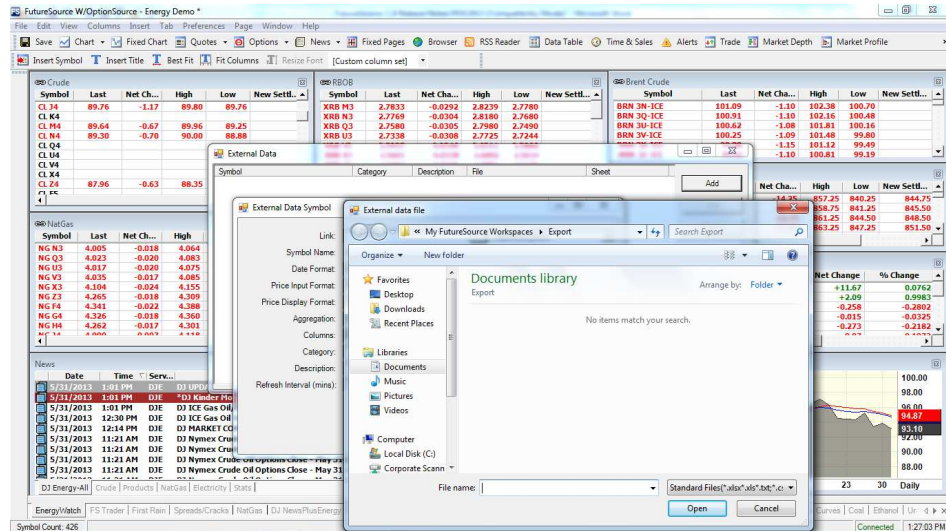
### 3.2.9 OptionWorks Support of NYSE/Euronext Commodities

Cocoa, coffee, rapeseed, wheat, corn and sugar from NYSE/Euronext are now supported in OptionWorks.



### 3.2.10 External Data – “.xlsx” File Format Support

With FutureSource 3.6, “.xlsx” Excel data is now supported in External Data. From [Preferences] select “External Data” and click “ADD”. Click “...” symbol on the Link and note that “.xlsx” is a supported file type.



### 3.2.11 Detailed Quotes (New Window)

A new Window is now available in FutureSource 3.6 called Detailed Quotes. This Window let’s you view detailed quotes for a symbol as well as a chart in a single view. From [Quotes], select “Detailed Quotes” to open the window. Enter a symbol or click on a symbol in a linked window to see the detailed quote for the symbol.



FutureSource W/OptionSource - Energy Demo

File Edit View Columns Insert Tab Preferences Page Window Help

Save Chart Fixed Chart Quotes Options News Fixed Pages Browser RSS Reader Data Table Time & Sales Alerts Trade Market Depth Market Profile

Insert Symbol Insert Title

Quotes Board

Symbol Last Net Ch... High Low New Settl...  
 CL #F 92.89 -0.72  
 CL Q3 93.09 -0.71  
 CL U3 92.88 -0.69  
 CL V3 92.88 -0.68  
 CL X3 92.43 -0.73  
 CL Z3 91.99 -0.69  
 CL F4 91.39 -0.81  
 CL G4 91.30 -0.84  
 CL H4 90.85 -0.48  
 CL L4 80.76 -1.17

Flash Quotes  
 Strip Calculator  
 Spread Matrix  
 Detailed Quotes  
 VWAP Calculator

Crude  
 Symbol Last Net Ch... High Low New Settl...  
 BRN #3 2.7868 -0.0265 2.8239 2.7780  
 XRR #3 2.7779 -0.0294 2.8180 2.7680  
 XRR #2 2.7991 -0.0294 2.7980 2.7480  
 XRR #1 2.7352 -0.0294 2.7725 2.7244  
 XRR V3 2.9962 -0.0321 2.6311 2.5866  
 XRR #3 2.9871 -0.0308 2.6020 2.6144  
 XRR Z3 2.5462 -0.0345 2.5801 2.5376  
 XRR #4 2.5368 -0.0384 2.5227 2.5327  
 XRR G4 2.5557 -0.0234 2.5817 2.5557

Brent Crude  
 Symbol Last Net Ch... High Low New Settl...  
 BRN 3# ICE 101.04 -1.15 102.38 100.70  
 BRN 3Q-ICE 100.84 -1.17 102.16 100.48  
 BRN 3# ICE 100.54 -1.16 101.81 100.16  
 BRN 3Q-ICE 100.22 -1.12 101.48 99.80  
 BRN 3# ICE 99.94 -1.12 101.12 99.69  
 BRN 3Q-ICE 99.59 -1.13 100.84 99.19

NatGas  
 Symbol Last Net Ch... High Low New Settl...  
 NG #3 4.007 -0.016 4.064 3.998  
 NG Q3 4.027 -0.016 4.083 4.018  
 NG U3 4.018 -0.019 4.075 4.010  
 NG V3 4.033 -0.019 4.085 4.023  
 NG X3 4.109 -0.019 4.155 4.099  
 NG Z3 4.261 -0.022 4.309 4.252  
 NG F4 4.342 -0.021 4.388 4.336  
 NG G4 4.326 -0.018 4.360 4.322  
 NG H4 4.262 -0.017 4.301 4.251  
 NG L4 4.002 -0.013 4.110 4.011

EIA Stocks  
 Symbol Description Last Net Ch... Time Date  
 WWSSTU EIA Wse 109321.1 +3500 11:08 AM 5/20/2013  
 NGASAD EIA Natu 2141.1 +88 10:30 AM 5/20/2013

Heating Oil  
 Symbol Last Net Ch... High Low New Settl...  
 HO #3 2.7990 -0.0441 2.8433 2.7913  
 HO #2 2.7991 -0.0451 2.8482 2.7906  
 HO Q3 2.8080 -0.0441 2.8520 2.8000  
 HO U3 2.8181 -0.0438 2.8592 2.8107

Financials  
 Symbol Last Net Change % Change  
 DOW JONES INDUSTRIAL AVER. 15322.30 -2.23 -0.0146  
 INTERNATIONAL BUSINESS MA... 211.19 +1.83 0.8741  
 EXXON MOBIL CORP 91.735 -0.355 -0.3856  
 LOREWS CORP 46.20 -0.01 0.0216  
 CHEVRON CORP NEW 124.80 -0.31 -0.2478

News  
 Date Time Serv...  
 5/31/2013 1:01 PM DDE D3 Kladner Morgan Energy Partners Cancels 52B California Oil Pipeline  
 5/31/2013 1:01 PM DDE D3 ICE Gas Oil/Brent Crude Oil/WTI Open Interest - May 31  
 5/31/2013 12:14 PM DDE D3 ICE Gas Oil/Brent Crude Oil/WTI Open Interest - May 31  
 5/31/2013 12:14 PM DDE D3 MARKET COMMENT: NWE Fuel-Oil Barge Prices Lower With Futures  
 5/31/2013 11:21 AM DDE D3 NYMEX Crude Oil Options Close - May 31 - 5  
 5/31/2013 11:21 AM DDE D3 NYMEX Crude Oil Options Close - May 31 - 3  
 5/31/2013 11:21 AM DDE D3 NYMEX Crude Oil Options Close - May 31 - 2

Light Crude Oil Aug 13  
 Symbol Last Net Ch... High Low New Settl...  
 XRR #3 2.7868 -0.0265 2.8239 2.7780  
 XRR #2 2.7771 -0.0302 2.8180 2.7680

Price Chart  
 LIGHT CRUDE OIL Aug 13  
 MA (CL, 9, 51, 93) TEMA (CL, 4, 9, 21, 66)  
 L: 89.80 H: 89.76 C: 89.75 A: -1.37  
 96.00  
 94.00  
 92.00  
 90.00  
 88.00  
 86.00  
 Apr 5 15 19 25 May 9 15 23 30 Daily

FutureSource W/OptionSource - Energy Demo

File Edit View Preferences Page Window Help

Save Chart Fixed Chart Quotes Options News Fixed Pages Browser RSS Reader Data Table Time & Sales Alerts Trade Market Depth Market Profile

ES@CL 2f

Symbol Last Net Ch... High Low New Settl...  
 CL #F 92.85 -0.76 93.85 92.25  
 CL Q3 93.07 -0.71 94.03 92.45  
 CL U3 93.10 -0.71 94.03 92.48  
 CL V3 92.88 -0.69 93.38 92.45  
 CL X3 92.43 -0.73 93.31 92.04  
 CL Z3 91.99 -0.69 92.87 91.42  
 CL F4 91.39 -0.81 91.66 91.00  
 CL G4 91.30 -0.84 91.48 90.75  
 CL H4 90.85 -0.48 90.85 90.30  
 CL L4 80.76 -1.17 80.88 80.76

Light Crude Oil Aug 13  
 Symbol Last Net Ch... High Low New Settl...  
 XRR #3 2.7868 -0.0265 2.8239 2.7780  
 XRR #2 2.7771 -0.0302 2.8180 2.7680

Price Chart  
 LIGHT CRUDE OIL Aug 13  
 MA (CL, 9, 51, 93) TEMA (CL, 4, 9, 21, 66)  
 L: 89.80 H: 89.76 C: 89.75 A: -1.37  
 96.00  
 94.00  
 92.00  
 90.00  
 88.00  
 86.00  
 Apr 5 15 19 25 May 9 15 23 30 Daily

Right Click Context Menu  
 Change Field  
 Delete Fields  
 Predefined Fields  
 Show Chart for ES@CL 2f  
 Show Quotes Grid for ES@CL 2f  
 Show Data Table for ES@CL 2f  
 Show Quote for ES@CL 2f  
 Add Price Alert for ES@CL 2f  
 Create Expression Shortcut for ES@CL 2f  
 Show Header  
 Show Chart  
 Show Grid  
 Flip Layout  
 Display Settings...

To customize the Detailed Quotes window or to launch other functions “Right Click” in the Window.

FutureSource W/OptionSource - Energy Demo - [Detailed Quotes]

File Edit View Preferences Page Window Help

Save Chart Fixed Chart Quotes Options News Fixed Pages Browser RSS Reader Data Table Time & Sales Alerts Trade Market Depth Market Profile

ES@CL 2f

Symbol Last Net Ch... High Low New Settl...  
 CL #F 92.85 -0.76 93.85 92.25  
 CL Q3 93.07 -0.71 94.03 92.45  
 CL U3 93.10 -0.71 94.03 92.48  
 CL V3 92.88 -0.69 93.38 92.45  
 CL X3 92.43 -0.73 93.31 92.04  
 CL Z3 91.99 -0.69 92.87 91.42  
 CL F4 91.39 -0.81 91.66 91.00  
 CL G4 91.30 -0.84 91.48 90.75  
 CL H4 90.85 -0.48 90.85 90.30  
 CL L4 80.76 -1.17 80.88 80.76

Light Crude Oil Aug 13  
 Symbol Last Net Ch... High Low New Settl...  
 XRR #3 2.7868 -0.0265 2.8239 2.7780  
 XRR #2 2.7771 -0.0302 2.8180 2.7680

Price Chart  
 LIGHT CRUDE OIL Aug 13  
 MA (CL, 9, 51, 93) TEMA (CL, 4, 9, 21, 66)  
 L: 89.80 H: 89.76 C: 89.75 A: -1.37  
 96.00  
 94.00  
 92.00  
 90.00  
 88.00  
 86.00  
 Apr 5 15 19 25 May 9 15 23 30 Daily

Right Click Context Menu  
 Change Field  
 Delete Fields  
 Predefined Fields  
 Show Chart for ES@CL 2f  
 Show Quotes Grid for ES@CL 2f  
 Show Data Table for ES@CL 2f  
 Show Quote for ES@CL 2f  
 Add Price Alert for ES@CL 2f  
 Create Expression Shortcut for ES@CL 2f  
 Show Header  
 Show Chart  
 Show Grid  
 Flip Layout  
 Display Settings...

From here you will be able to add or delete fields that are being displayed, customize the display with pre-defined template displays depending on instrument type, flip

between a portrait or landscape view and remove the chart if so desired. You can also “Show” Chart, Quotes Grid, Data Table and add Price Alerts or Create Expression Shortcuts from the “Right Click”.

### 3.2.12 Ability to Highlight and Set Colors for Dow Jones Headlines

With FutureSource 3.6, you now have the ability to highlight and set colors for Headline only news flashes as well as “Hot News” from Dow Jones. From a News Window, “Right Click” and select “Display Settings”

The screenshot displays the FutureSource 3.6 interface with several data tables and a 'Display Settings' dialog box. The dialog box is open over a news window, allowing users to customize the appearance of news headlines. The 'Display Settings' dialog includes the following options:

- Date / Time Format:** Date: [5/31/2013], Time: [1:56 PM], Local Time, GMT.
- News Story Window:** Headline Font: [Verdana], Size: [14], Story Font: [Lucida Console], Size: [10].
- News Headlines:** Font: [Tahoma], Size: [10].
- Hot News:** Background: [Red], Foreground: [White].
- Standalone News:** Background: [White], Foreground: [Black].
- News List Columns:** Date, Time, Symbols, Headline.
- Highlight Hot News:**  Highlight Hot News,  Highlight Standalone News.
- Use these settings for new tabs.

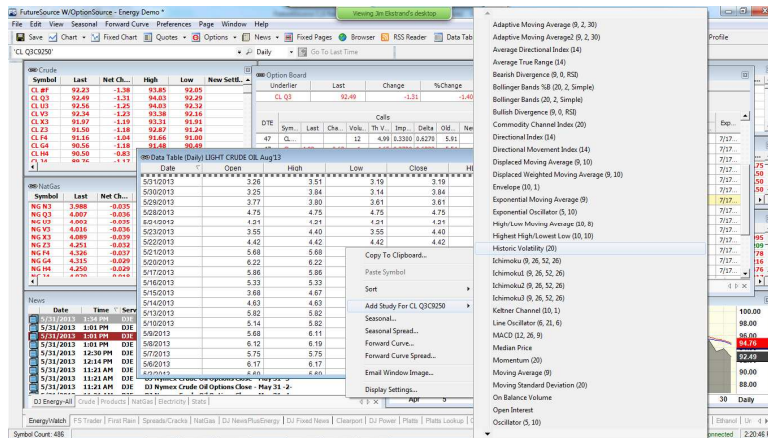
From this display you can set the colors to alert you to Dow Jones “Hot” news and Dow Jones Headline News.

### 3.2.13 Support “Recent” Field for Expressions & Functions

The “Recent” field can now be used for Expression and Function Calculations.

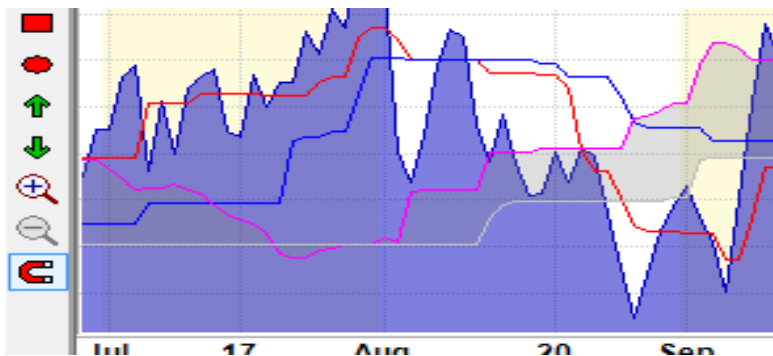
### 3.2.14 Add Historic Volatility Study to Data Table Studies

The Historic Volatility Study found in the Chart Studies is now available as a Study in the Data Table. From the Data Table, “Right Click” and select “Add Study”. Select “Historic Volatility Study”.



### 3.2.15 “Snap to Chart Values” Tool Defaulted to “On”

The “Snap to Chart Values” tool is now defaulted to “On” to facilitate drawing lines to connect values in a Chart Window.



### 3.2.16 New RTD/Excel Add-in’s

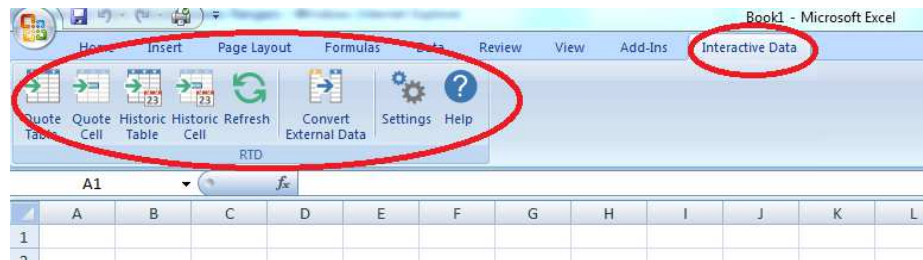
FutureSource 3.6 introduces a new suite of RTD/Excel add-ins to make pulling history easier. Improving our Excel tools is critical since virtually every user of FutureSource uses the data we provide for analysis of one type or another in Excel. The add-in is used by front office traders, mid-office analyst/risk and back-office accountants.

Enhancements to the Excel Add-in include:

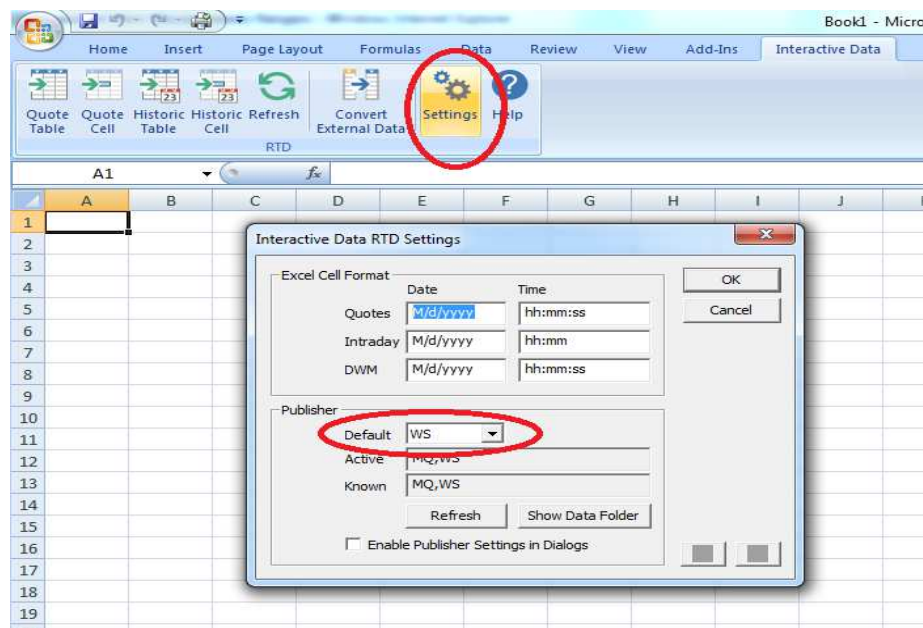
- New Symbol tree for lookups
- New Excel Ribbon for 2007 and Above
- New library of sample excel templates
- Historic Time Series:
  - Fill options – Fill Forward, Fill backwards and Interpolate are available for dealing with non-trading days

- Filter called Count, used for pulling a relative count of time series bars
- Expanded date range filtering
- Expanded time range filtering for intraday time series
- Ability to have the table be static or fully cell referenced to allow for dynamic/automatic changes
- Ability to have in ascending or descending order

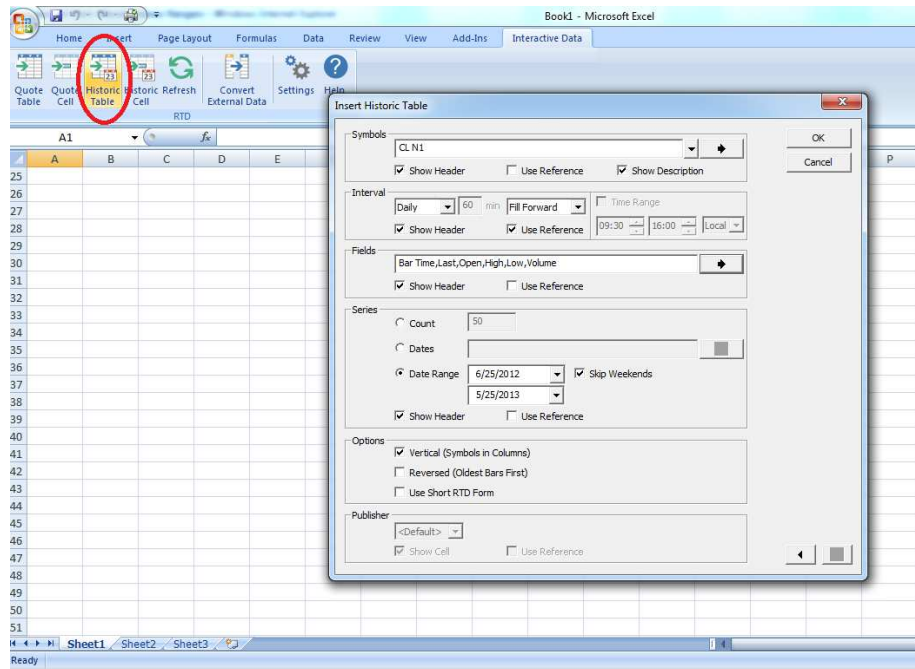
To access the new RTD/Excel add-ins, open Excel and Click on “Interactive Data” from the main tool bar. The new Excel Ribbon will be displayed.



Click the “Settings” icon and ensure that the “Default Publisher” is set to “WS”.

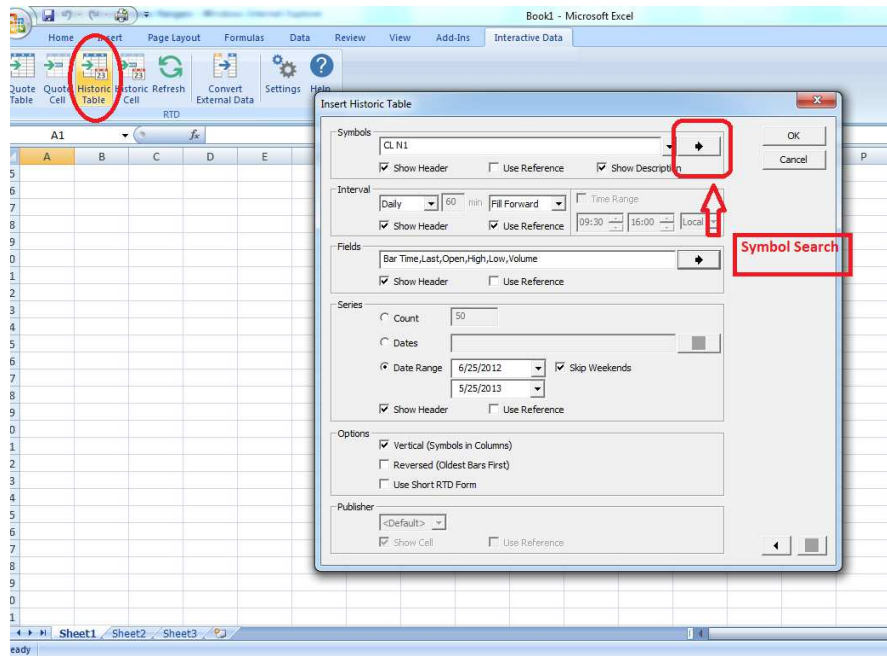


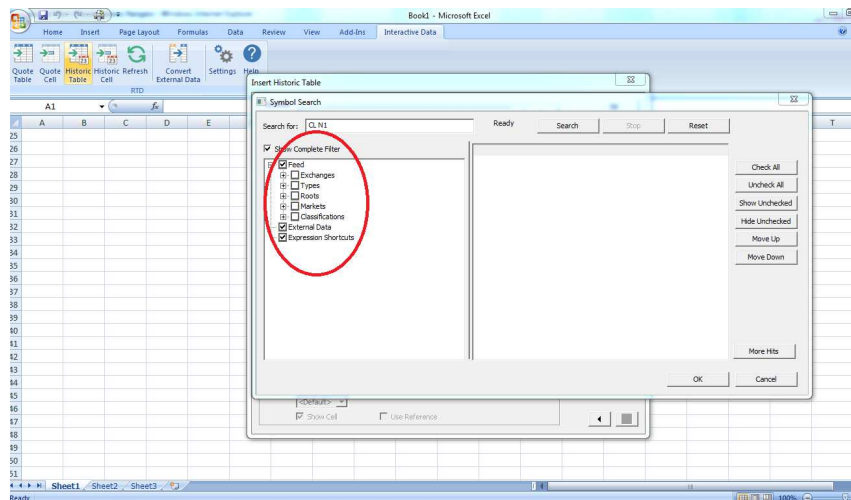
Click the “Historic Table” to see the new options to search for and capture historical data.



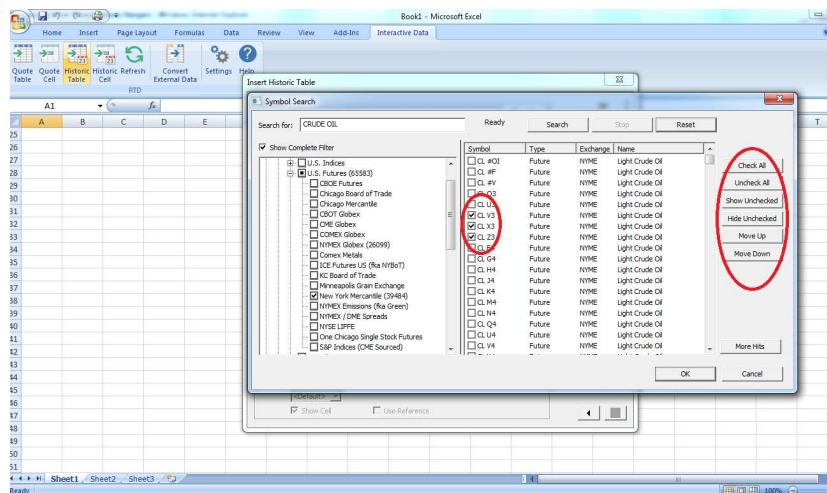
To open the new “Tree Structure Symbol Search”, click on the “side arrow” button on the Symbol Bar. Please note that you can also search history on “Expressions Shortcuts” as well as “External Data”.

In addition, you can search for symbols by using the “Type Ahead” function in the Symbol Bar.





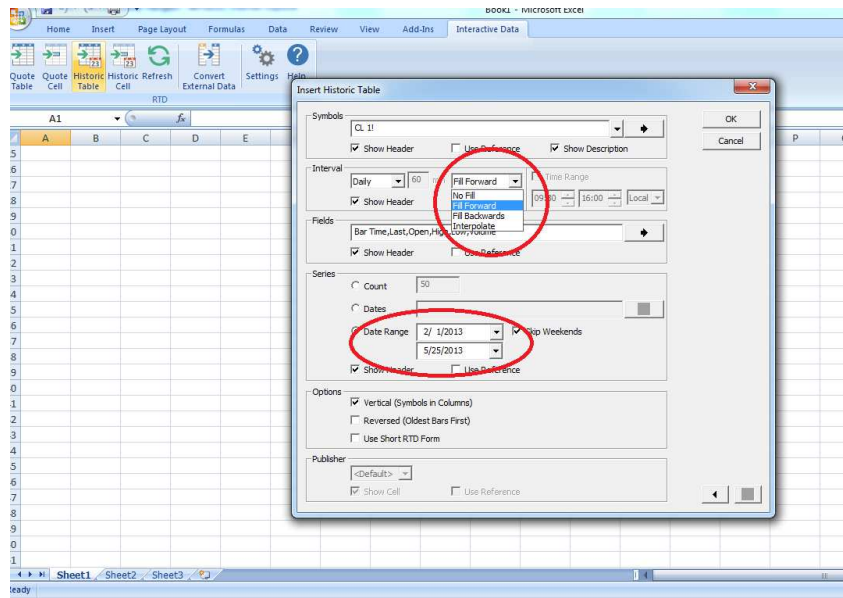
You can also pull history for multiple symbols simultaneously by selecting individual symbols or by “Checking All” symbols.



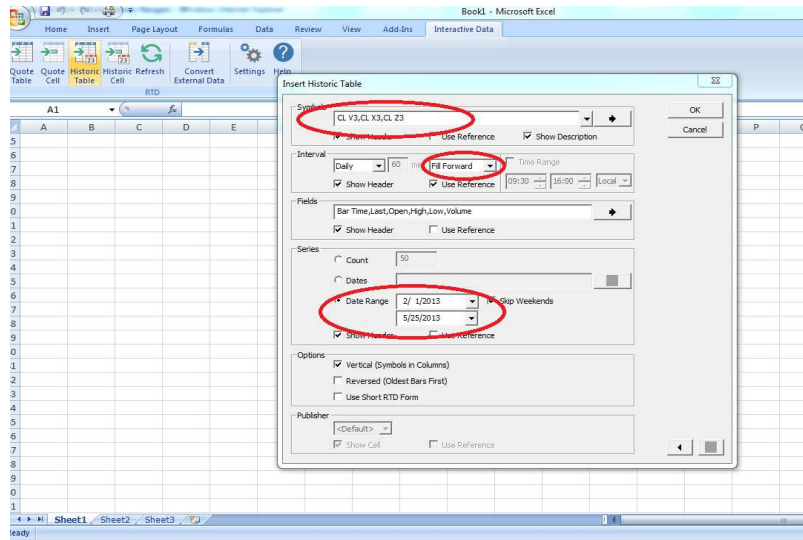
In the “Historic Table”, there are new data fill options. The Fill options include: No Fill, Fill Forward, Fill backwards and Interpolate for dealing with non-trading days and missing data:

- No Fill – Leaves holidays and non-trading days blank.
- Fill Forward – Fills previous day's data forward until there is another price available.
- Fill Backwards – Fills data backwards until another data point is available.
- Interpolate – Averages the prior day's data and next available data point and then fills forward. If multiple days are missing it uses the results for the first missing day for averaging the results for the next missing day and so on.

You also now have the ability to specify a date range as well.



As an example, we will pull history for October, November and December 2013 NYMEX Crude. We will pull the history from February 1, 2013 through May 25, 2013. For any missing data, we will Fill Forward.



This will result in the following historical pull being returned:

Bar Time	Last	Open	High	Low	Vol	Bar Time	Last	Open	High	Low	Vol	Bar Time	Last	Open
2/1/2013	98.79	98.45	99	98.45	11027	2/1/2013	98.41	98.18	98.58	97.5	7664	2/1/2013	97.99	97.99
2/4/2013	97.49	97.82	97.82	97.18	3988	2/4/2013	97.19	97.86	97.86	97	3248	2/4/2013	96.86	96.86
2/5/2013	98.04	97.99	98.3	97.99	7947	2/5/2013	97.78	97.5	98	97.5	5546	2/5/2013	97.48	97.48
2/6/2013	98.18	97.09	98.29	97.09	30122	2/6/2013	97.93	97.5	98.05	97	8133	2/6/2013	97.64	97.64
2/7/2013	97.77	98.57	98.59	97.44	9790	2/7/2013	97.57	98.3	98.3	97.39	7825	2/7/2013	97.3	97.3
2/8/2013	97.81	97.88	98.3	97.55	17077	2/8/2013	97.62	97.68	98.01	97.61	9174	2/8/2013	97.35	97.35
2/11/2013	98.72	97.32	98.72	97.21	18785	2/11/2013	98.42	97.2	98.42	97.2	11208	2/11/2013	98.06	98.06
2/12/2013	99.08	98.56	99.15	98.4	8221	2/12/2013	98.75	98.5	98.8	98.5	7960	2/12/2013	98.34	98.34
2/13/2013	98.67	99.22	99.41	98.67	10975	2/13/2013	98.36	98.83	99.05	98.36	7177	2/13/2013	97.97	97.97
2/14/2013	98.9	98.78	99.07	98.36	4737	2/14/2013	98.57	98.65	98.75	98.55	3350	2/14/2013	98.18	98.18
2/15/2013	97.59	98.53	98.53	97.11	6050	2/15/2013	97.35	98.23	98.23	96.98	5287	2/15/2013	97.05	97.05
2/18/2013	97.59	98.53	98.53	97.11	6050	2/18/2013	97.35	98.23	98.23	96.98	5287	2/18/2013	97.05	97.05
2/19/2013	98.05	97.36	98.05	97.02	6942	2/19/2013	97.77	97.32	97.77	96.68	3450	2/19/2013	97.43	97.43
2/20/2013	96.22	98.31	98.31	95.52	5883	2/20/2013	95.98	98.02	98.02	95.31	5023	2/20/2013	95.69	95.69
2/21/2013	93.93	95.62	95.62	93.85	6479	2/21/2013	93.71	93.77	94.2	93.65	5483	2/21/2013	93.45	93.45
2/22/2013	94.25	94	94.56	93.89	3013	2/22/2013	94.03	93.8	94.08	93.65	2622	2/22/2013	93.76	93.76
2/25/2013	94.27	94.3	95.35	93.99	3862	2/25/2013	94.08	94.9	95.03	94.02	2824	2/25/2013	93.84	93.84
2/26/2013	93.69	93.26	94.37	93.24	6349	2/26/2013	93.49	93.26	94.2	93.06	5128	2/26/2013	93.25	93.25
2/27/2013	93.65	93.75	94.05	93.3	6683	2/27/2013	93.41	93.07	93.83	93.07	3205	2/27/2013	93.14	93.14
2/28/2013	93.03	93.54	93.84	92.67	4095	2/28/2013	92.78	93.57	93.6	92.53	5091	2/28/2013	92.52	92.52
3/1/2013	91.89	92.2	92.2	91.37	6028	3/1/2013	91.68	92.59	92.59	91.21	4680	3/1/2013	91.43	91.43
3/4/2013	91.34	91.58	91.99	90.65	2355	3/4/2013	91.12	91.6	91.61	90.67	3229	3/4/2013	90.86	90.86
3/5/2013	92.62	91.55	92.07	91.38	8324	3/5/2013	91.81	91.45	91.85	91.17	6018	3/5/2013	91.54	91.54
3/6/2013	91.49	91.68	91.81	90.95	4764	3/6/2013	91.27	91.48	91.48	90.56	3171	3/6/2013	90.99	90.99
3/7/2013	92.36	91.45	92.36	91.39	9509	3/7/2013	92.09	91.23	92.09	91.23	7516	3/7/2013	91.77	91.77

## 4 Fixes & Performance Enhancements

The following fixes and performance enhancements are included in FutureSource 3.6:

- TTP 25054: Charts – Slow loading of workspaces with many complicated expressions
- TTP 25055: Forward Curves – Wrong futures added to static forward curves using wizard
- TTP 25607: Symbol Search – Increase the number of symbols returned in Symbol Lookup
- TTP 25790: Chart – Snap drawing tool on by default
- TTP 17472: Option Board – Options do not populate when DTE=0
- TTP 23879: Crash – User crash when adding Bollinger or Bullish Divergence to Charts
- TTP 24234: Copy Column Headers with Edit > Copy as Text
- TTP 24401: Special trades not handled properly in Quote, Chart, T&S
- TTP 24704: Menu Item Changes
- TTP 24865: Exception – Spread Matrix
- TTP 25838: Market Profile – FS freeze when loading from “Right Click” on quote or chart
- TTP 18312: Option Board – Display of Negative Strikes in Option Board
- TTP 24201: OptionSource – Change default End Date for the Time in the Analyze setting
- TTP 25582: News – Odd behaviour when more than one headline window is open with similar filters
- TTP 25895: Quote Board – Add new Column Setting “Futures2”



## 5 System Requirements

### 5.1 Minimum Operating System and Browser Requirements

- Operating System Requirements  
XP, Vista or Windows 7  
Windows NT, ME, 95, 98 and 2000 are not supported
  
- Minimal Hardware Requirements  
Intel® Core™ 2 Duo, 2.0 GHz or faster  
2GB of RAM or higher  
100MB of hard drive space  
.Net 4.0 Framework  
1024x768 or higher screen resolution
  
- Recommended Hardware Requirements  
Intel® Core™ i3, 2.4 GHz or faster  
3GB of RAM or higher  
100MB of hard drive space  
.Net 4.0 Framework  
1024x768 or higher screen resolution
  
- Preferred Requirements (Power User)  
Intel® Core™ i5, 2.5 GHz or faster  
4GB of RAM or higher  
100MB of hard drive space  
.Net 4.0 Framework  
1024x768 or higher screen resolution

### 5.2 Other Requirements

- Required Ports for FutureSource Trader: 2823 and 443