

Version	Date
FutureSource Workstation 3.00	September 25, 2007

Workstation 3.0



Release Notes
09/25/07

Version	Date
FutureSource Workstation 3.00	September 25, 2007

Quote Board Enhancements

The Quote Board has been enhanced to allow for more customization of Rows and Columns. The changes allow the user to display more quotes on a single page by the use of Field Groups.

This is accomplished by **Splitting** a quote board.

From the **Context** menu, select **Split** and you will be presented with 5 choices.

Split Options	
Insert Before	Creates new group to the left of the selected group
Insert After	Creates new group to the right of the selected group
Remove	Removes the selected group
Auto Size	Auto Size selected group
Auto Size All	Auto Size all groups on the Quote Board

Each group may have its own unique set of column fields. When a new group is created, it will inherit the column list from the group that was active when you selected split. After it is created you may change the column set.

The screenshot shows a window titled "Quotes - Sheet-1" with a grid of quote data. The data is organized into three groups, each with its own set of columns. The first group has columns for Symbol, Last, Change, and Time. The second group has columns for Symbol, Last, Change, and Time. The third group has columns for Symbol, Last, Change, and Time. The data is as follows:

Symbol	Last	Change	Time	Symbol	Last	Change	Time	Symbol	Last	Change	Time
CL U7	72.25	-0.17	1:24:15 PM	HO U7	1.9679	+0.0038	1:24:15 PM	XR B U7	1.9330	-0.0112	1:24:07 PM
CL V7	72.02	-0.36	1:24:15 PM	HO V7	1.9931	+0.0035	1:24:02 PM	XR B V7	1.8846	-0.0046	1:23:08 PM
CL X7	71.80	-0.37	1:23:36 PM	HO X7	2.0188	+0.0012	1:16:41 PM	XR B X7	1.8710	-0.0062	1:10:00 PM
CL Z7	71.41	-0.45	1:24:14 PM	HO Z7	2.0400	+0.0009	1:24:02 PM	XR B Z7	1.8663	-0.0059	1:23:54 PM
CL F8	71.38	-0.26	12:02:01 PM	HO F8	2.0525	-0.0031	1:15:58 PM	XR B F8	1.8840	-0.0017	12:02:57 PM
CL G8	71.06	-0.42	1:11:50 PM	HO G8	2.0478	-0.0083	1:17:43 PM	XR B G8	1.9077	+0.0005	11:59:23 AM
CL H8	71.27	-0.06	10:02:24 AM	HO H8	2.0325	-0.0096	1:19:39 PM	XR B H8	1.9292	0	9:34:57 AM
CL J8	71.06	-0.17	2:19:22 AM	HO J8	2.0000	-0.0076	1:19:49 PM	XR B J8			
CL K8	71.10	-0.05	9:31:22 AM	HO K8	1.9825	+0.0049	11:45:36 AM	XR B K8			
CL M8	70.30	-0.78	1:10:14 PM	HO M8	1.9695	+0.0124	10:08:01 AM	XR B M8	2.0810	+0.0261	10:23:25 AM

You can customize the color and thickness of the split line via the Quotes Display Settings.

From the **Context Menu**, Select **Display Settings** and go to Split Line Settings

Split Line Settings	
Color	Color of the line that separates groups
Width	Width/Thickness of the line

Version	Date
FutureSource Workstation 3.00	September 25, 2007

Additional Fields Available within the Quotes Board

Two additional fields are now available for your Quote Boards.

CntrHigh – The High over the life of the Futures Contract

CntrLow – The Low over the life of the Futures Contract

Extended Expressions Values within the Quotes Board

When you have an expression/spread inside a quote board, you will now be able to view more than just the Last/Current Price. Open, High & Low is available.

Symbol	Last	Open	High	Low	Change	Time
(CL V7 + CL X7 + CL Z7) / 3	78.37	78.30	78.88	77.91	-0.21	11:10:19 AM
(CL V7 + CL X7 + CL Z7 + CL F8 + CL G8 + CL H8) / 6	76.96	77.02	77.44	76.55	-0.24	11:10:19 AM

Symbol Entry Shortcut Available within the Quotes Board

A special syntax can now be used for quicker building of Quote Pages containing Futures Forward Symbols.

Syntax: *[Futures Root] [BeginningForwardNumber – EndingForwardNumber]

Example: *CL 1-12

Example: *BRN-ICE 1-12

Example: *CL=2 1-12

Symbol	Bid	Ask	High	Low	Last	Change	Time	Volume	OpenInt
CL V7	77.67	77.69	78.32	76.92	77.67	+0.18	1:19:18 PM	296680	266423
CL X7	76.41	76.43	77.03	75.72	76.37	+0.11	1:19:04 PM	146736	248806
CL Z7	75.17	75.20	75.79	74.48	75.17	+0.09	1:19:16 PM	54243	204792
CL F8	74.37	74.40	74.69	73.68	74.33	+0.08	1:18:26 PM	13982	71856
CL G8	73.74	73.81	74.10	73.00	73.60	-0.02	12:43:32 PM	6117	39036
CL H8	73.30	73.38	73.67	72.75	73.10	-0.07	12:49:48 PM	4501	40052
CL J8	73.00	73.15	73.13	72.62	72.96	+0.10	12:42:42 PM	1933	40117
CL K8	72.79	72.97	73.15	72.35	72.76	+0.13	12:42:42 PM	2132	46502
CL M8	72.63	72.77	73.00	72.10	72.75	+0.28	12:45:07 PM	3177	53540
CL N8	70.52	74.88	72.60	72.25	72.60	+0.27	12:45:07 PM	269	18457
CL Q8	70.46		72.10	72.10	72.10	+0.36	9:48:09 AM	77	13861
CL U8	70.35	72.58						221	45792

Version	Date
FutureSource Workstation 3.00	September 25, 2007

Expiration Tool Tip

A new easier method for retrieving Expiration date on Future and Future Options is now available. When you mouse over the Symbol Cell in a Quote Board a Tool Tip will appear with the contracts expiration date.

Symbol	Bid	Ask	High	Low	Last	Change	Time	Volume	OpenInt
ES U7	1496.75	1497.00	1502.75	1480.50	1496.75	+14.25	11:21:24 AM	2610986	2093698
ES Z7	1509.00	1509.50	1514.25	1495.50	1508.25	+13.75	11:20:09 AM	3392	18282

ES U7: Expiration: 9/21/2007

Chart Window Enhancements

The Chart Window has been enhanced to allow multiple charts to be displayed without using up valuable screen real estate.

This is accomplished by the use of Chart Tabs.

When a new Chart Window is opened you will see 3 page tabs at the bottom of the window. A Chart window can have infinite tabs.

From the **Context** menu of any Tab, you will be presented with 3 choices.

Tab Options	
Add Tab	Creates new screen within the single Chart Window
Rename Tab	Allows for renaming of tab
Delete Tab	Removes the tab from the Chart Window

Version	Date
FutureSource Workstation 3.00	September 25, 2007



In the example above, I have a single chart window with 6 different symbols in it.

Each Tab within the chart window can have its own unique Aggregation and Plot Style.

Logarithmic Chart Display

Workstation now allows for Logarithmic scaling of Chart Data. A Logarithmic price scale is skewed so that a given distance always represents the same “Percentage” change in price, rather than the same absolute change in price (as is the case for a regular linear chart). The distance from 1 to 10 is the same as the distance from 10-100 on a logarithmic chart, but the latter distance is 10 times greater on a linear chart.

To change between Scale types:

From the **Context Menu** of the **Price Scale**, select **Log Scale**.

Version	Date
FutureSource Workstation 3.00	September 25, 2007

Seasonal Charting

A Seasonal Chart allows you to overlay data for a particular symbol(s) for particular years and Month Ranges (Seasons).

From the **Context Menu** select **Add Seasonal** or **Add Seasonal Spread**

OR

From the **Seasonal Drop Down Menu** above the Toolbar

Seasonal:

Add Seasonal

Years

- 2007
- 2006
- 2005
- 2004
- 2003
- 2002
- 2001
- 2000
- 1999

Season

Whole Year

Specify Month Range

From: Jan

To: Dec

Contract Form

Single Instrument

Symbol: _____

Single Root Futures

Root: _____

Suffix: _____

Exp. Month: Jan (F)

Pick period prior to expiration

Years: 1 year prior to expiration

OK Cancel

Version	Date
FutureSource Workstation 3.00	September 25, 2007

Years	Description
Year	Years that you wish to chart
Contract Form	Description
Single instrument	Select to chart symbols such as Indices, Stocks, etc.
Symbol	Input field for symbol you select
Single Root Futures	Select to chart a Futures Contract
Root	Input field for the Futures Root Symbol
Suffix	Input field for Futures Symbols that contain a suffix at the end. (Must include entire suffix, i.e. -ICE as opposed to just ICE)
Exp. Month	Select the Contract Month for the Futures
Pick Period Prior to Exp*	To select data from a contract N years prior to the contracts Delivery Year
Years	How many years prior you wish to chart
Season	Description
Whole Year	Select to have no Month/Season Restriction
Specify Month Range**	Select to specify a Month range for the chart
From:	Input field for starting month
To:	Input field for ending month

* See *Advanced Seasonal Charts* for example of *Pick Period Prior to Exp*

** See *Advanced Seasonal Charts* for example of *Month Ranges*

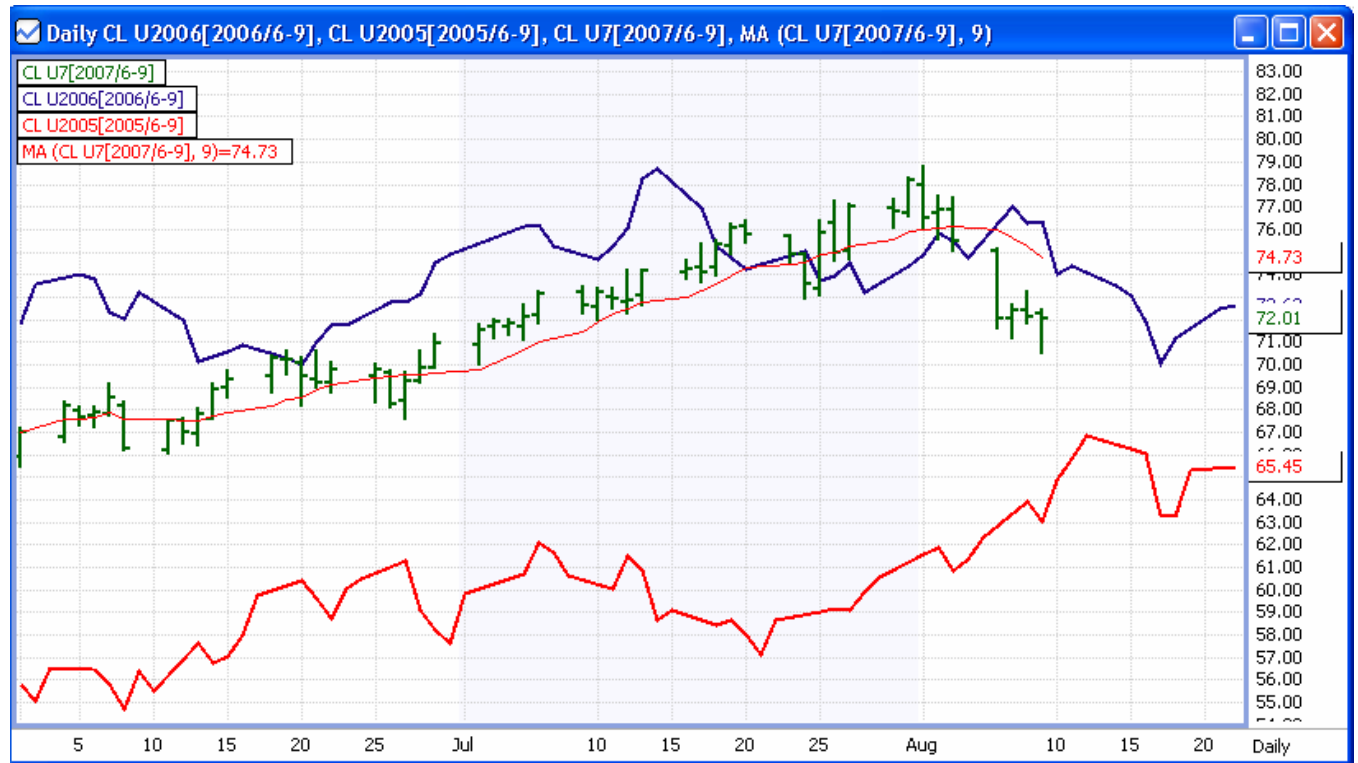
Version	Date
FutureSource Workstation 3.00	September 25, 2007



In the example above we are viewing a Seasonal Chart of the symbol HAL, for the years 2005-2007 during the months June thru September.

Chart Header: Within the Chart Header you will see a definition of each plot that is being shown. It will also indicate the color of the plot. In this example you see a line for HAL[2006/6-9] . This tells you that the Blue line is a chart of HAL from 2006 showing the months 6 thru 9. The information in the Chart Header becomes very valuable when you start to do more **advanced customization** to your Seasonal Chart, which is explained further down.

Version	Date
FutureSource Workstation 3.00	September 25, 2007



Example 2

In the example above we are viewing a Seasonal Chart of Crude's September contract, for the years 2005-2007 during the months June thru September. There is also a moving average applied to the U7 contract.

Version	Date
FutureSource Workstation 3.00	September 25, 2007

Seasonal Spread

Years	Description
Year	Years that you wish to chart
Contract Form	Description
Cash Spread	Select to spread symbols such as Indices, Stocks, etc.
Symbol	Input fields for symbols you wish to spread
Futures Spread	Select to spread Futures Contracts
Root	Input field for the Futures Root Symbol
Suffix	Input field for Futures Symbols that contain a suffix at the end. (Must include entire suffix, i.e. –ICE as opposed to just ICE)
Exp. Month	Select the Contract Month for the Futures

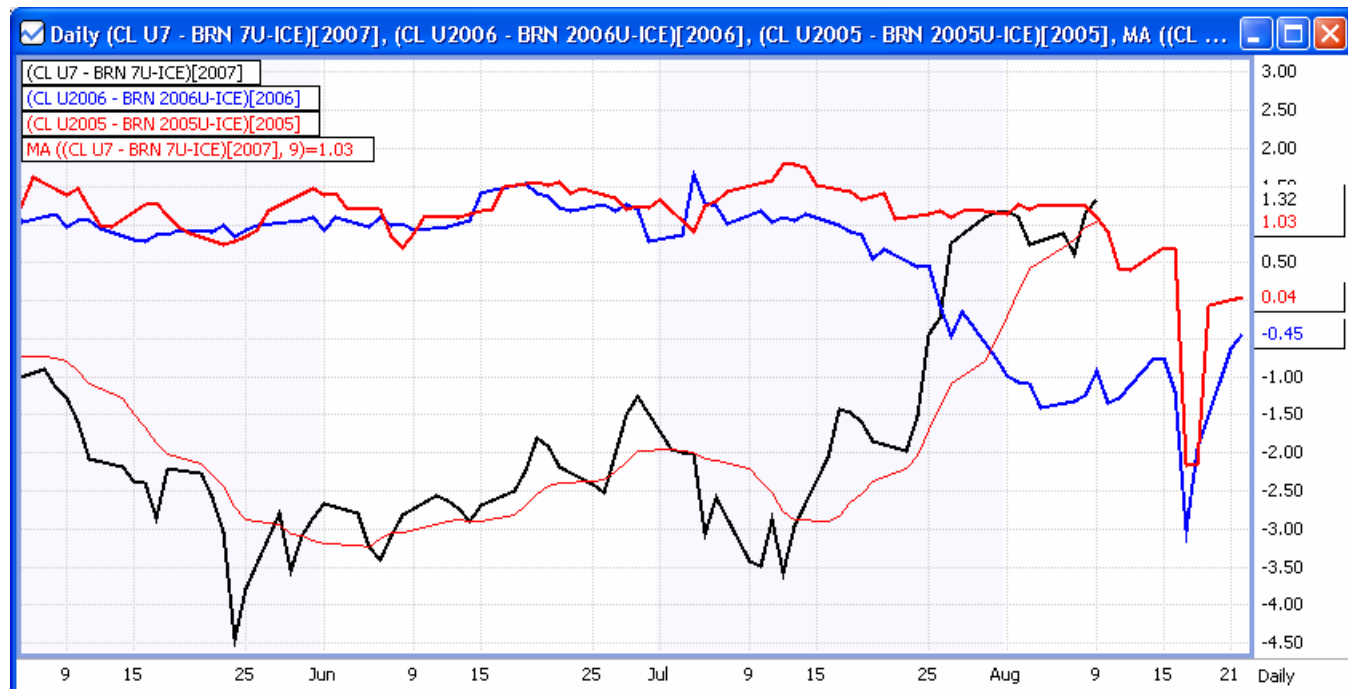
Version	Date
FutureSource Workstation 3.00	September 25, 2007

Pick Period Prior to Exp	To select data from a contract N years prior to the contracts Delivery Year
Years	How many years prior you wish to chart
Season	Description
Whole Year	Select to have no Month/Season Restriction
Specify Month Range	Select to specify a Month range for the chart
From:	Input field for starting month
To:	Input field for ending month
Multipliers	Description
Override Default	Select to override the default of 1.00
#1	Multiplier value applied to symbol 1
#2	Multiplier value applied to symbol 2



In the example above we are viewing a Seasonal Spread Chart of the symbols MSFT and CSCO, for the years 2006-2007, with no month restriction.

Version	Date
FutureSource Workstation 3.00	September 25, 2007



In the example above we are viewing a Seasonal Spread of Crude and Brent Crude, September contract for the years 2005-2007. There is also a Moving Average Applied to the 2007 Year.

Customizing Seasonal Charts:

When using Seasonal Chart Plots, they can be customized just as a normal chart can. This includes:

- Plot style (Bar, Candlestick, Line , Area, Dot, Level
- Aggregation (Daily, Weekly, Monthly)
- Applying Studies
- Applying Drawing Tools
- Color and Size
- Overlays of any additional Symbols
- And many other features that exist for normal charts.

Version	Date
FutureSource Workstation 3.00	September 25, 2007

Advanced Seasonal Charts

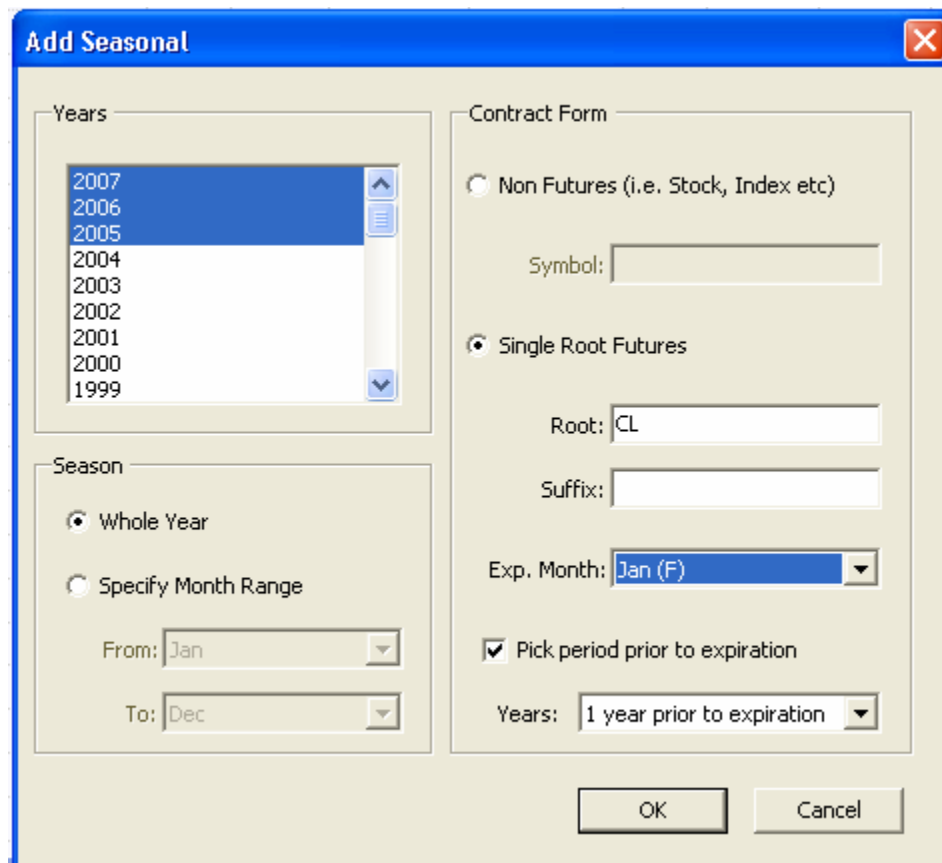
Within the Seasonal Charts Wizard, you also have a settings to specify Month Ranges and to pick period prior to expiration.

Pick Period Prior to Expiration

In this example, we want to see seasonal data for the January Crude Contract.

Crude Contracts expire in the month prior to the delivery month. So the January Crude Contract Expires in December (Which is the year prior to its Delivery Year).

So, to view a seasonal chart for the current Active January Contract, which is January 08, and to overlay year 2006 and 2005, I use the "Pick period prior to expiration" setting, because the January 08 contract traded and expired in 2007.



Version	Date
FutureSource Workstation 3.00	September 25, 2007



Month Range

You can view the seasonal data of the Sept Contract for RBOB Gasoline during April thru August.

When selecting a month range, the year selected corresponds to the Start/From Month.

In this example, it is straight forward that Apr-Aug is within a single year and doesn't cross Jan. 1st, in this case 2005, 2006 and 2007).

Version	Date
FutureSource Workstation 3.00	September 25, 2007

Add Season X

Years

2007
 2006
 2005
 2004
 2003
 2002
 2001
 2000
 1999

Contract Form

Non Futures (i.e. Stock, Index etc)

Symbol:

Single Root Futures

Root:

Suffix:

Exp. Month:

Pick period prior to expiration

Years:

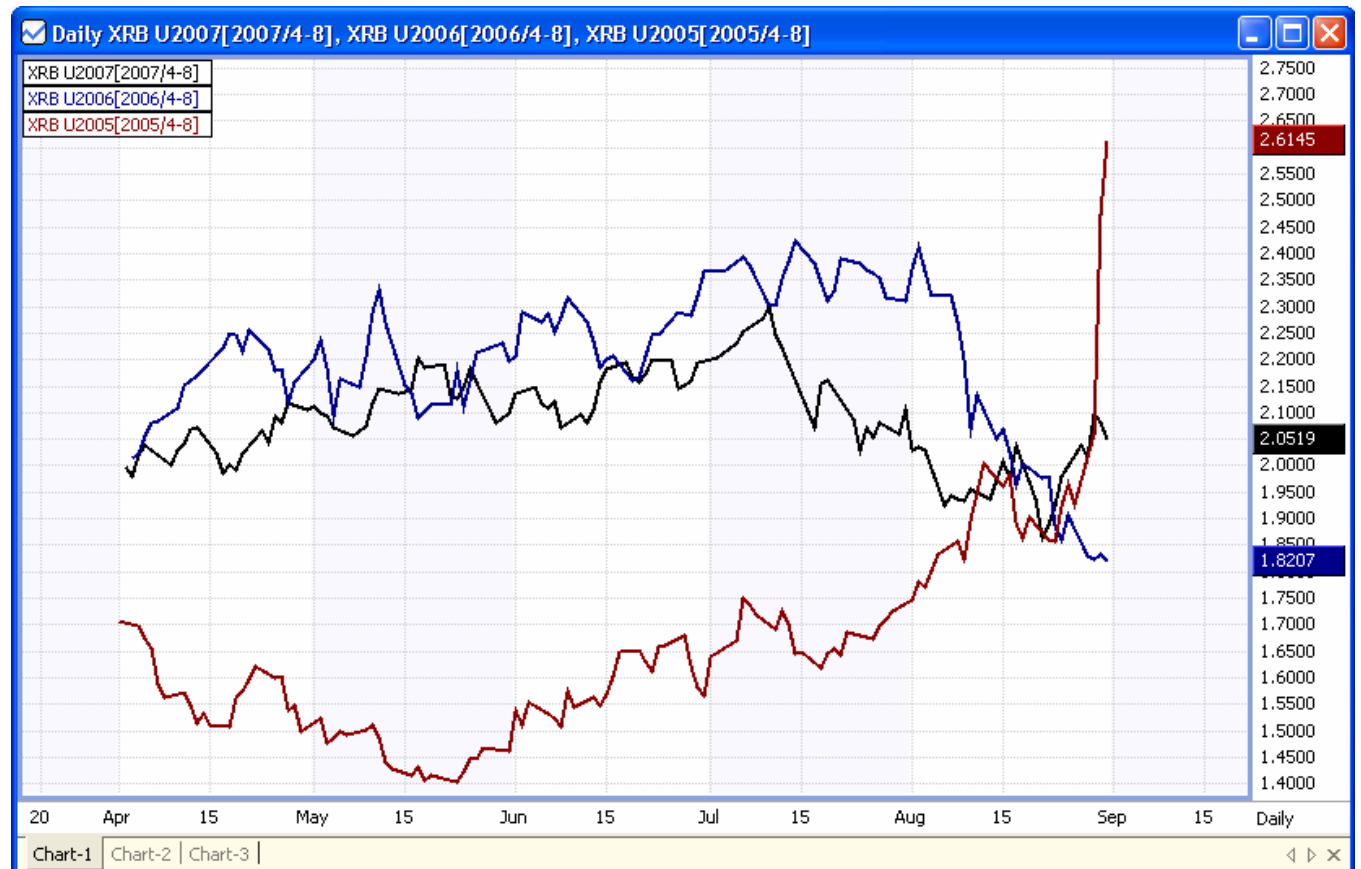
Season

Whole Year

Specify Month Range

From:

To:

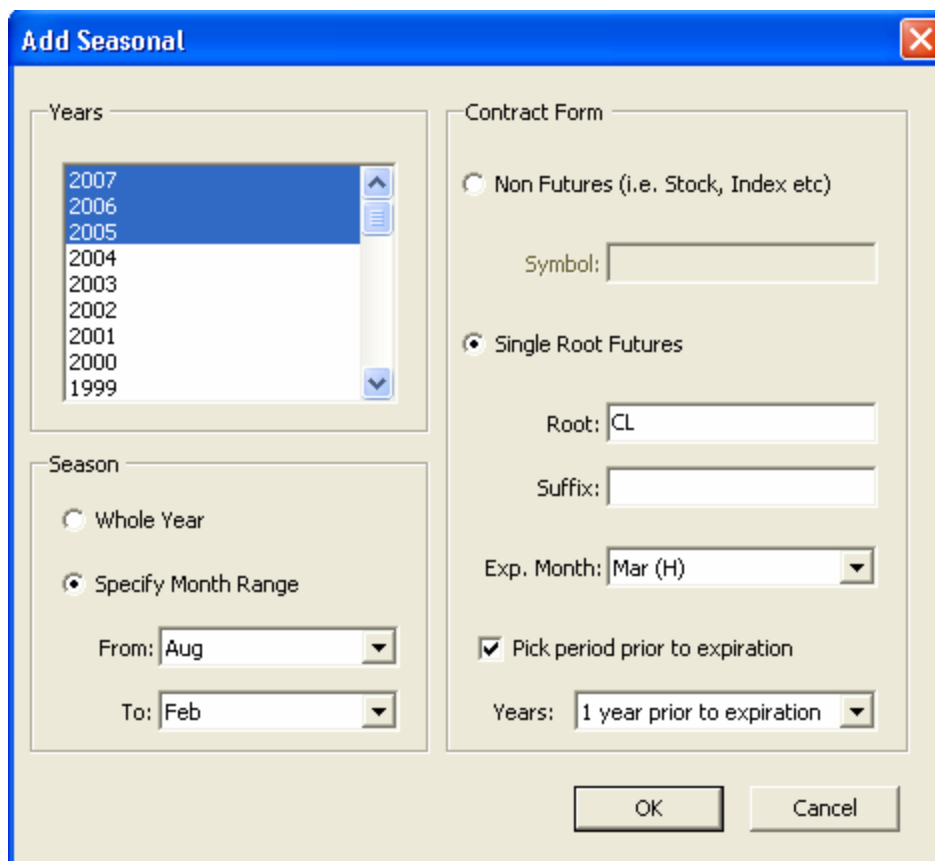


Version	Date
FutureSource Workstation 3.00	September 25, 2007

Black Plot: April 2007 to August 2007
Blue Plot: April 2006 to August 2006
Red Plot: April 2005 to August 2005

Month Range that spans New Year

In this example, you want to view seasonal data of the March Crude Contract from August to Feb.



In this Month Range you spans thru the New Year.

When selecting a month range, the *year selected* **corresponds** to the *Start/From Month*.

So if the From/Start month is August and the End/To is February, I select 2005-2007 and select "1 year prior to expiration", it will plot:

- August 2005 to February 2006 for the March 06 Contract
- August 2006 to February 2007 for the March 07 Contract
- August 2007 to February 2008 for the March 08 Contract

Version	Date
FutureSource Workstation 3.00	September 25, 2007



Advanced Seasonal Charts Syntax

You can also manually enter a Seasonal Symbol into a chart as opposed to using the wizard, or after using the wizard you wish to add an additional seasonal plot. Manual entry is also very useful if you wish to have a Seasonal Spread that is more than 2 Legs.

Syntax for entering manually: =(Expression or Symbols)[Year/Month Range]

Example: =(‘CL U2006’-‘BRN 2006U-ICE’)[2005/6-9]

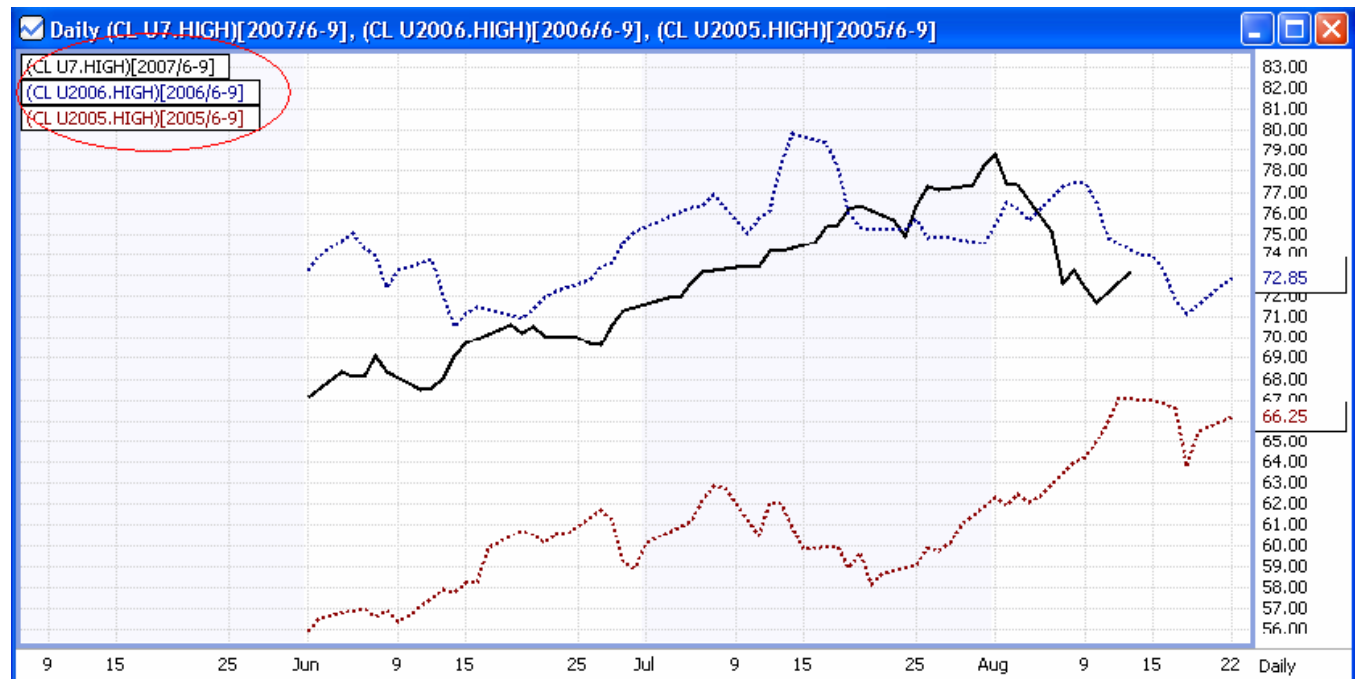
1. (‘CL U2006’-‘BRN 2006U-ICE’) – My Symbol or Expression
2. 2005 – Calendar year to grab data from.
3. 6-9 – Calendar months to only display

You may also chart just individual aspect. An example would be if you just wanted to see the High. For this you would need to manually create the plot as opposed to using the wizard.

Example: =(‘CL U6’.HIGH)[2007/6-9].

Note: When manually creating Seasonal Charts, each additional year that you Chart would be added just as if it was another Overlay on the chart.

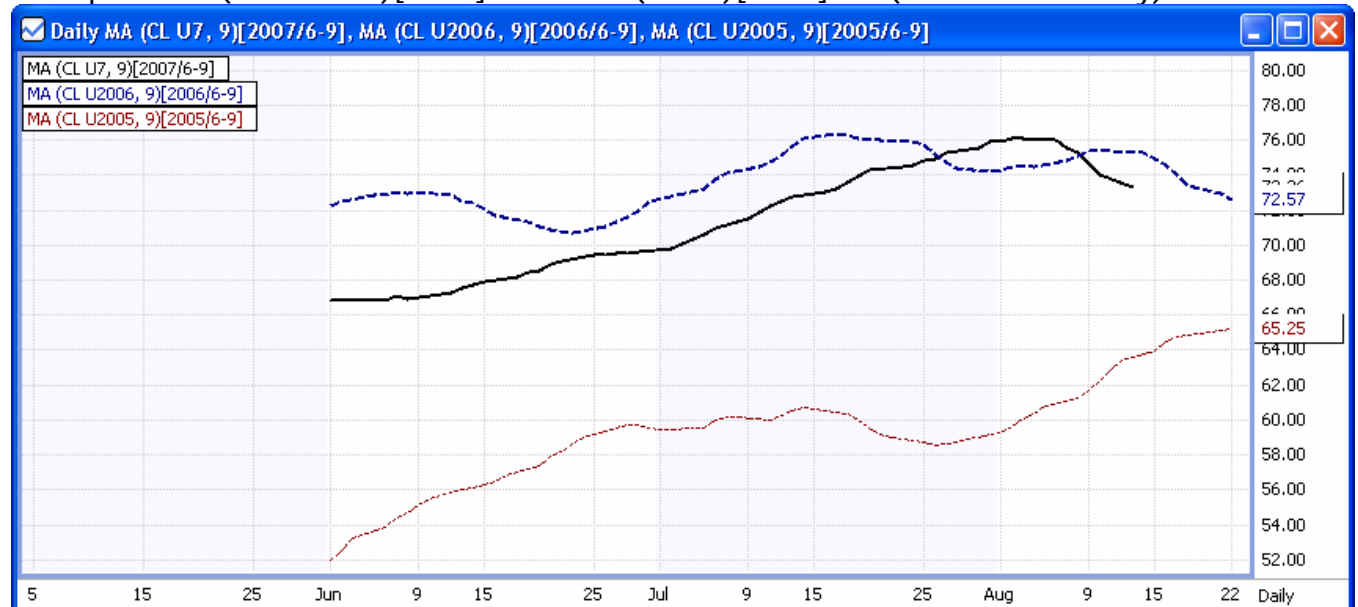
Version	Date
FutureSource Workstation 3.00	September 25, 2007



In the example above we are viewing the High's for the Sept Crude contract over the years 2005-2007.

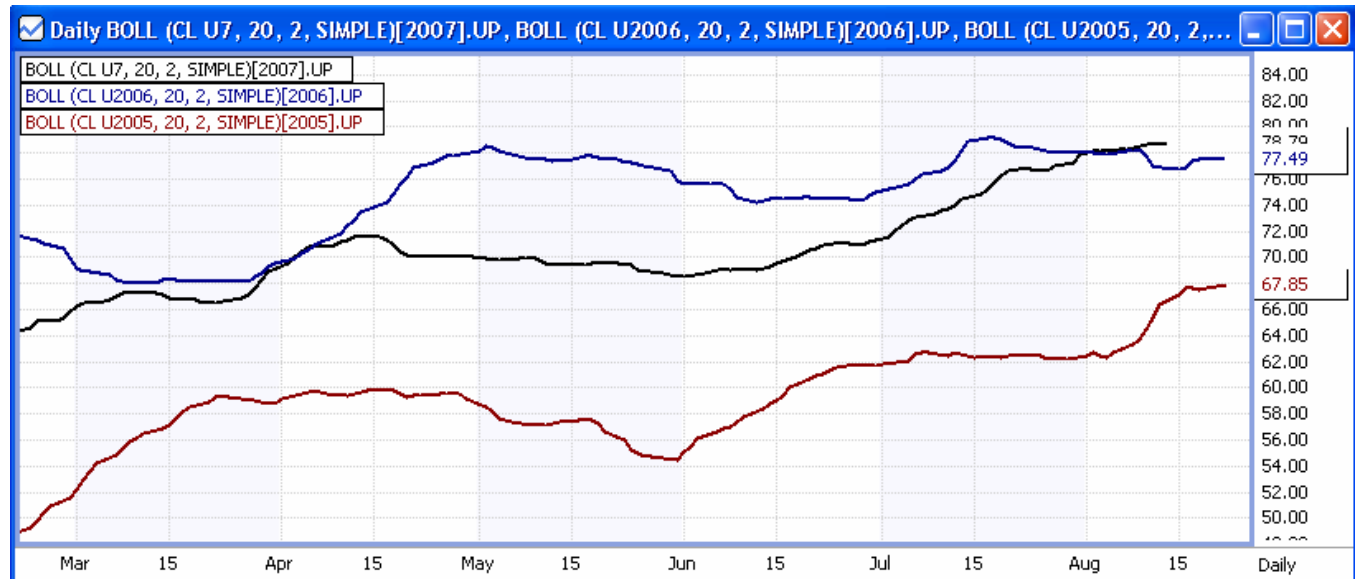
Another benefit of creating a Seasonal Chart outside of the Wizard is the charting of Technical Analysis.

Example: =MA('CL U2006')[2006] or =BOLL(MSFT)[2006].UP (if multi-Plot Study)



In the example above we are viewing the Moving Averages for the Sept Crude contract over the years 2005-2007.

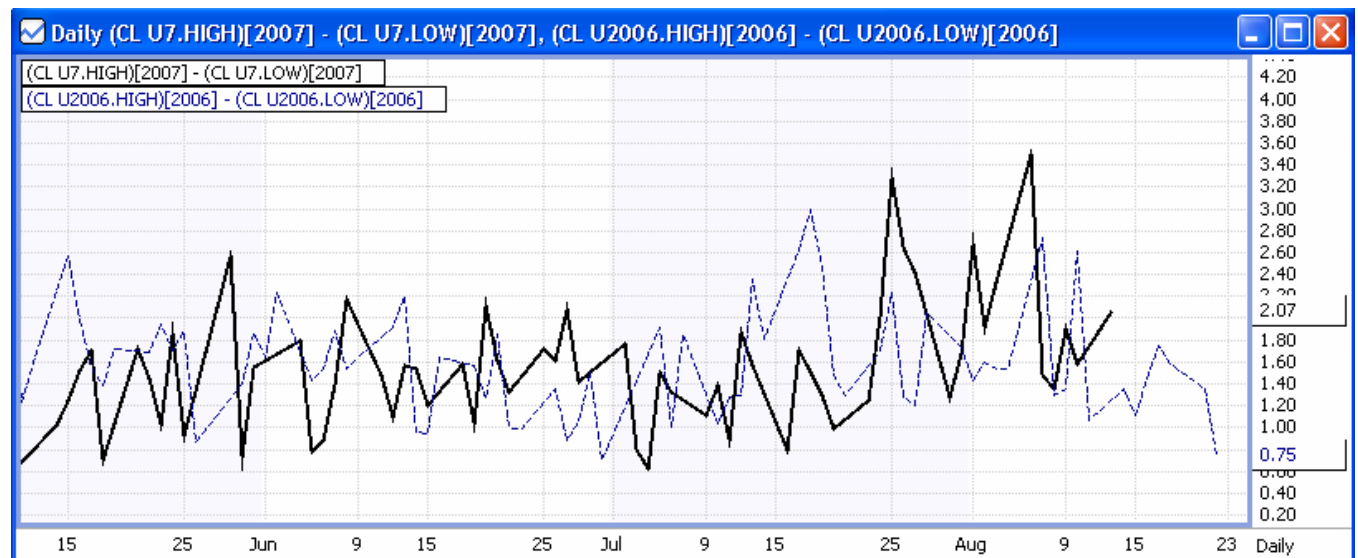
Version	Date
FutureSource Workstation 3.00	September 25, 2007



In the example above we are viewing the Bollinger Bands Up Line for the Sept Crude contract for the years 2005-2007.

Another benefit of creating a Seasonal Chart outside of the Wizard is the charting of field spreads. An example would be to view the Range of High-Low.

Example: $=('CL\ U2006'.HIGH)[2006] - ('CL\ U2006'.LOW)[2006]$



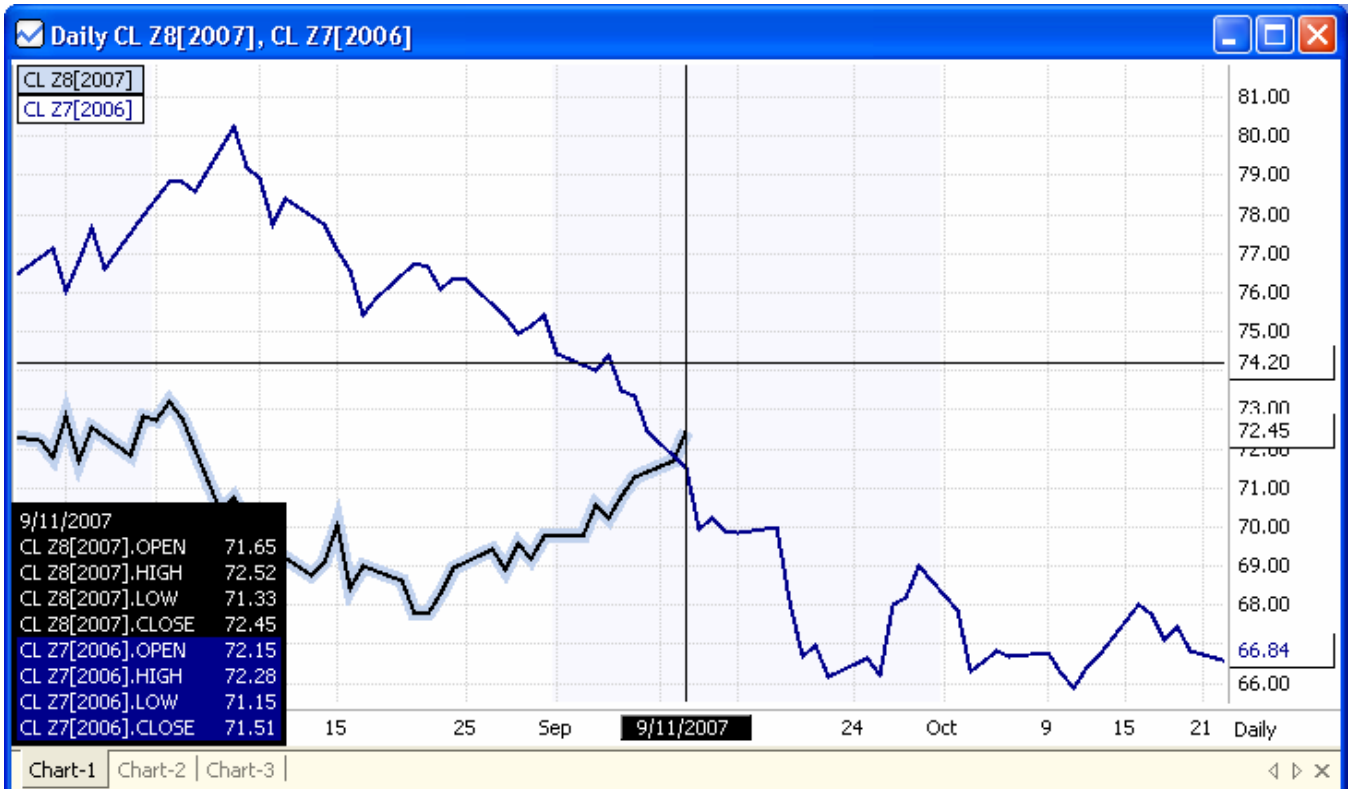
In the example above we are viewing the High/Low Range for the Sept Crude Contract for the years 2006-2007

Another benefit of creating a Seasonal Chart outside of the Wizard is that you can customize display years for contracts.

Version	Date
FutureSource Workstation 3.00	September 25, 2007

See the **many Examples** below:

Example: ='CL Z8'[2007] & 'CL U7'[2006]



In the example above we are viewing CL Z8 Data from 2007 and CL Z7 Data from 2006. Seasonal Data can also be viewed from the **Data Table Window**. This is done from the **Seasonal Drop Down Menu** above the Toolbar.

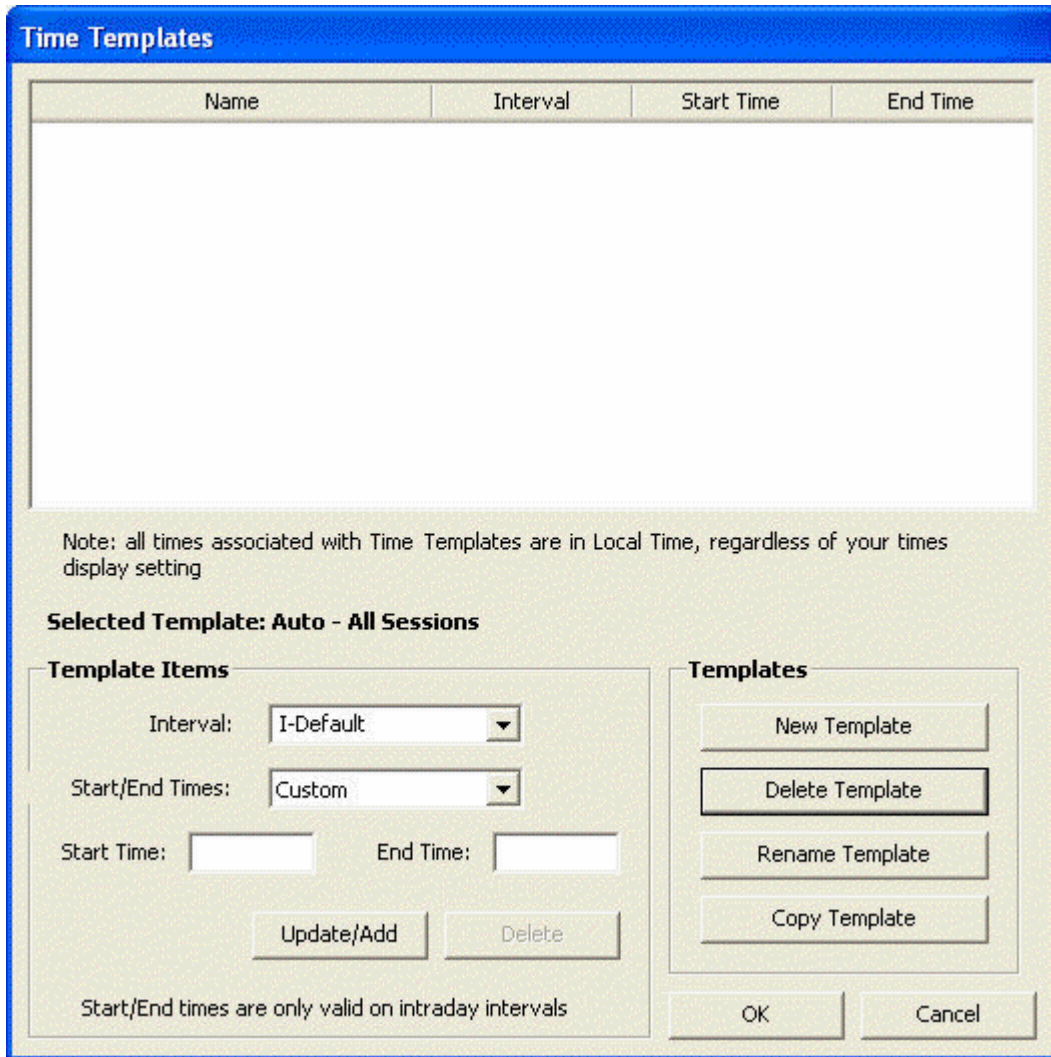
Time Templates

Time Templates are a feature that allows you to control the start and end times of data displayed on your Intraday Chart.

Time Templates Dialog

From the **Context** menu, select **Time Templates | Edit Time Templates**

Version	Date
FutureSource Workstation 3.00	September 25, 2007



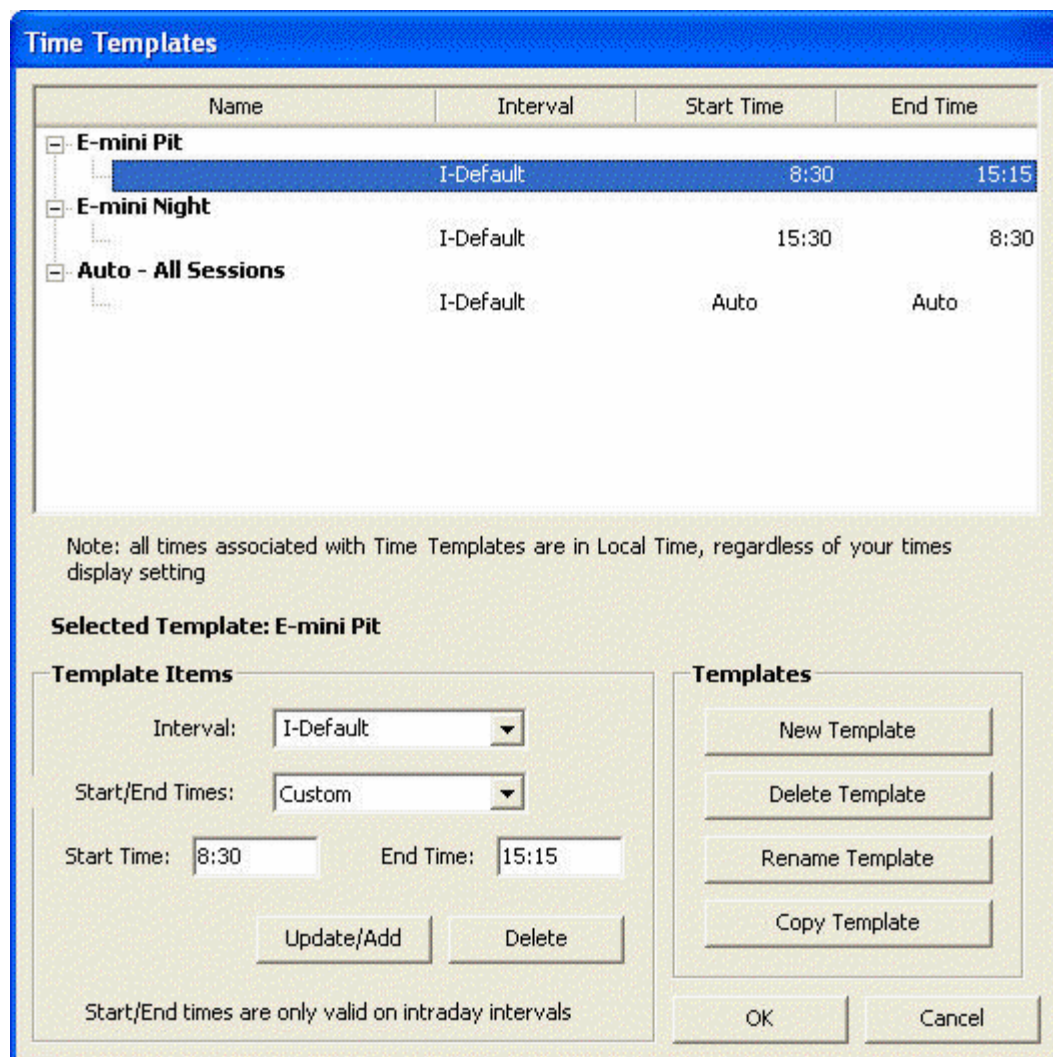
Templates	Description
New Template	Create Template
Delete Template	Delete Template
Rename Template	Rename Template
Copy Template	Create a copy of a Template
Template Items	Description
Interval	The Intraday Interval to which the Time Templates is applied. I-Default will apply Time Template to all Intraday Intervals.
Start/End Times	Custom allows you to put in your own Start and End times. Auto uses all sessions.

Version	Date
FutureSource Workstation 3.00	September 25, 2007

Start Time	Time of day to start displaying bars. (Users Local Time Zone)
End time	Time of day to stop displaying bars. (Users Local Time Zone)
Update/Add	Used to update Parameters of Template
Delete	Used to delete Parameters of Template

Creating Templates

1. Click New Template, Assign Name, Click Ok.
2. Highlight new template, and choose your Template Items.
 1. Select I-Default for all Intraday Intervals **or** specify specific Interval
 2. Select Custom or Auto Times
 3. If Custom, Fill in Start and End Time (User Local Time, 24 Hr)
 4. Click Update/Add
3. Click Ok after adding all templates



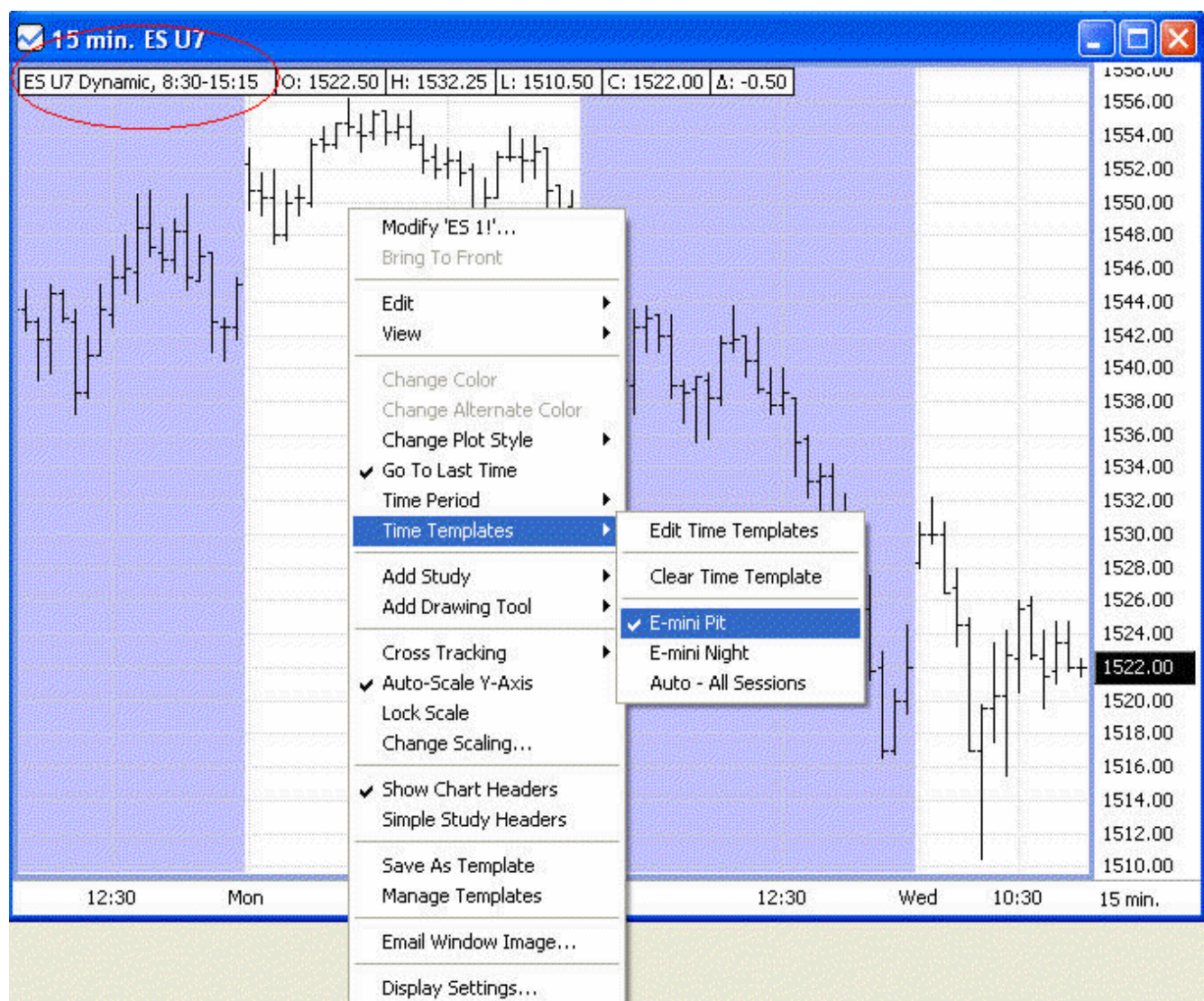
Version	Date
FutureSource Workstation 3.00	September 25, 2007

Apply and Clear Time Templates

Applying

1. Open a Intraday Chart and Insert Symbol
2. Right Click to view Context Menu.
 1. Highlight Time Templates
 2. Select Time Template to Apply

Chart heading displays Time Template Parameters



Version	Date
FutureSource Workstation 3.00	September 25, 2007

Removing

1. Right Click to view Context Menu.
 1. Highlight Time Templates
 2. Select Clear Time Template

Note: When changing symbol on Intraday Chart, Time Template will remain applied until cleared

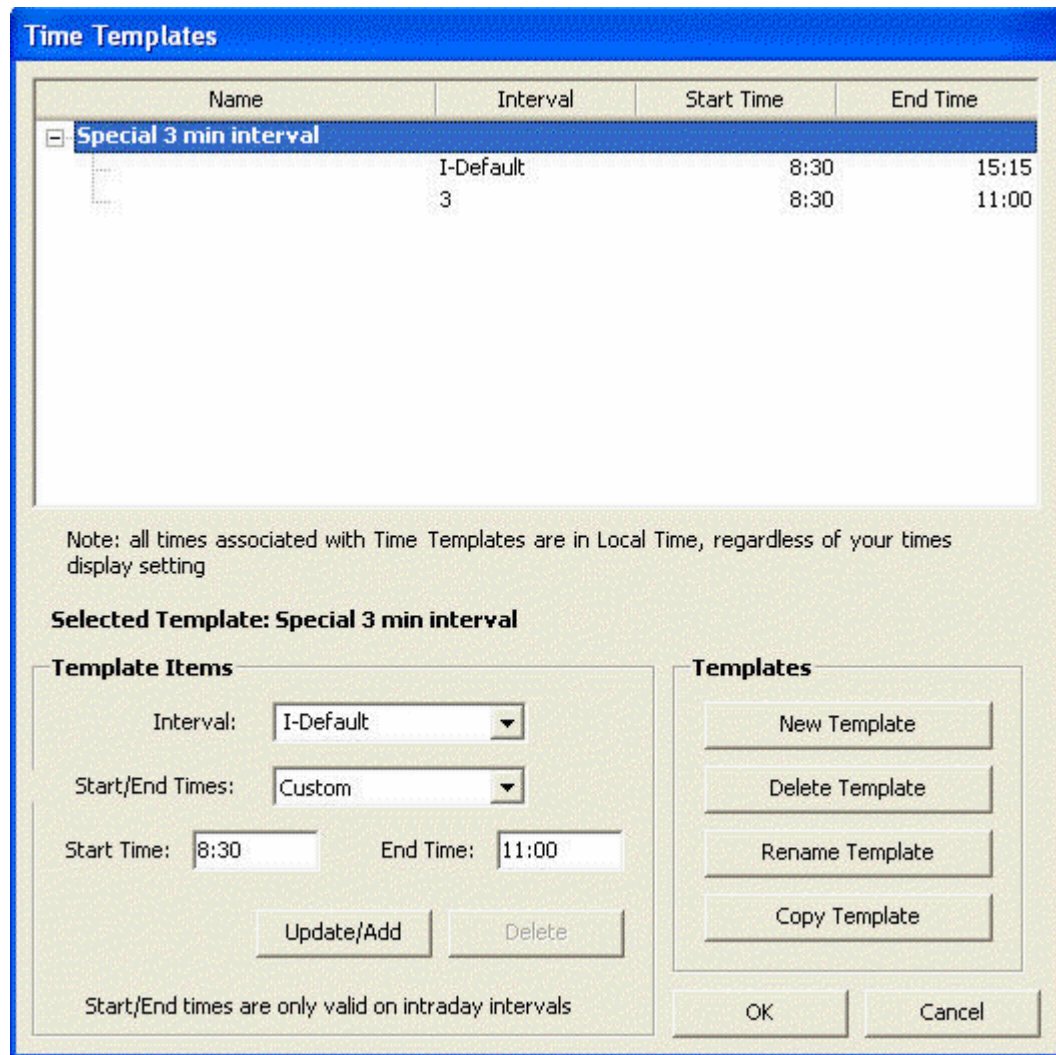
Working with Multiple Intervals

You can have a single time template that contains different properties depending on the Intraday Interval of the chart.

This feature is useful when you want to have a general rule for most Intraday intervals but wish to apply a specific time template rule to a specific Intraday aggregation. Remember that you use the I-Default setting to cover all Intraday intervals, but if you want a specific Intraday interval(s) to have a special time template rule(s), follow these steps.

1. Create your Time Template with I-Default as the interval
2. Once you have it created, highlight the Template Name that you would like to add an additional interval too, set your parameters and click Update/Add
3. Click Ok When Done.
4. Apply time template to chart. Change Intraday Intervals of the chart to see the different rules applied. Rule that is active is visible in chart header.

Version	Date
FutureSource Workstation 3.00	September 25, 2007

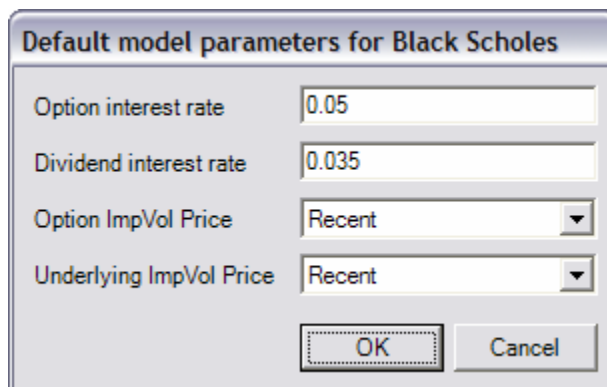


In the example shown, all Intraday intervals will use the 8:30 to 15:15 times, but when the chart is changed to a 3 min chart the 8:30 to 11:00 times will be automatically applied.

Version	Date
FutureSource Workstation 3.00	September 25, 2007

Default Parameters for Black Scholes Option Pricing Model

The default values for the Black Scholes option pricing model parameters are set through the following dialog box. It is accessible via the menu item **Preferences | Edit Default Model Parameters | Black Scholes**:



The **Option Interest Rate** is the short-term cost of capital for the currency in which the option is denominated. For USD-based options, it is usually set to a value like the USD LIBOR rate, the 90-day T-Bill rate, or the nearby Eurodollar rate.

The **Dividend Interest Rate** is only used for stock index options. It is set to the annual dividend rate of the basket of stocks that makes up the stock index.

The **Option ImpVol Price** is the data aspect of the option that is used in calculating the ImpVol column.

The **Underlying ImpVol Price** is the data aspect of the underlying instrument to the option that is used in calculating the ImpVol column.

For the dialog box displayed above, the Option Interest Rate is 5% per year, the Dividend Rate is 3.5% per year, and both prices are set to Recent. The ImpVol column will display the implied volatility calculated using the Recent price for both the option and the underlying instrument for that option. The Recent price is equal to the Last price unless the Last is blank; then Recent is equal to OldSet.

Additional Fields Available within the Options Board

AskSize – The number of shares that are being offered for sale at the ask price

Bid Size – The number of shares that are being offered for purchase at the bid price.

Version	Date
FutureSource Workstation 3.00	September 25, 2007

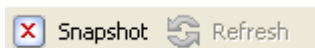
Snapshot Data Capabilities

Workstation now has snap shot capability within 3 of its Windows.

- Option Board
- Fixed Pages (Snapshot is on by default)
- OptionSource

On the toolbar of each of the 3 windows you will see a button to activate.

Not Activated:



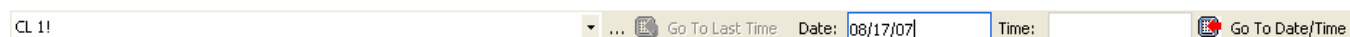
Activated:



This feature is useful when viewing many Future Option Symbols so that they do not count against the Workstation Symbol Limit.

Time & Sales Enhancements

Time and Sales has been improved to allow for easier retrieval and viewing of Historical Data. This functionality is available via a Date and Time Setting that is available on the Toolbar.



Toolbar Options	
Date	Trading Day you wish to view
Time	Time Range from the Trading Day you wish to view (User Local Time, 24 Hr)

Input	Result
Date Only	Data from that specific Trading Day Only
Date & Start/End Time	Data from that specific Trading Day for the given Time Span Only
Date & Start Time Only	Data from that Specific Trading Day, from the Start Time to the end of the Trading Day
Date & End Time Only	Data from that Specific Trading Day, from the End Time to the beginning of the Trading Day

Version	Date
FutureSource Workstation 3.00	September 25, 2007

Start & End Time Only	Data from Current Trading Day, From the Start Time to the End Time. Example: 0915-1430
Start Time Only	Data from Current Trading Day, from the Start Time updating Real Time until the end of the Trading Day. Example: 0915
End Time Only	Data from Current Trading Day, from the End Time to the beginning of the Trading Day. Example: -1430
No Date or Time	Data from Current Trading Day, Always Updating Real Time, ability to view continued history by scrolling backwards.

Note: When using End Time and Current Trading day, Time & Sales will update Real Time until End Time is reached.

Tip: Remember besides using the Mouse to Grab and Scroll backwards to view History, you can use the Page Up/Down buttons on the Keyboard for easier scrolling.

When you have a Time & Sales window that you have applied Date/Time restrictions to, it will always be noted in the Windows Title Bar.

Date	Time	Type	Value	Size	Identifier
8/16/2007	2:29:49 PM	Trade	71.00	1	
8/16/2007	2:29:38 PM	Trade	71.00	1	
8/16/2007	2:29:38 PM	Trade	71.00	1	
8/16/2007	2:29:38 PM	Trade	71.00	1	
8/16/2007	2:29:38 PM	Trade	71.00	1	
8/16/2007	2:29:38 PM	Trade	71.00	2	
8/16/2007	2:29:38 PM	Trade	71.00	1	
8/16/2007	2:29:38 PM	Trade	71.00	2	

News Window Enhancements

The News Window has been enhanced to allow for the display of more news windows and filters without using up valuable screen real estate within your Workstation Terminal.

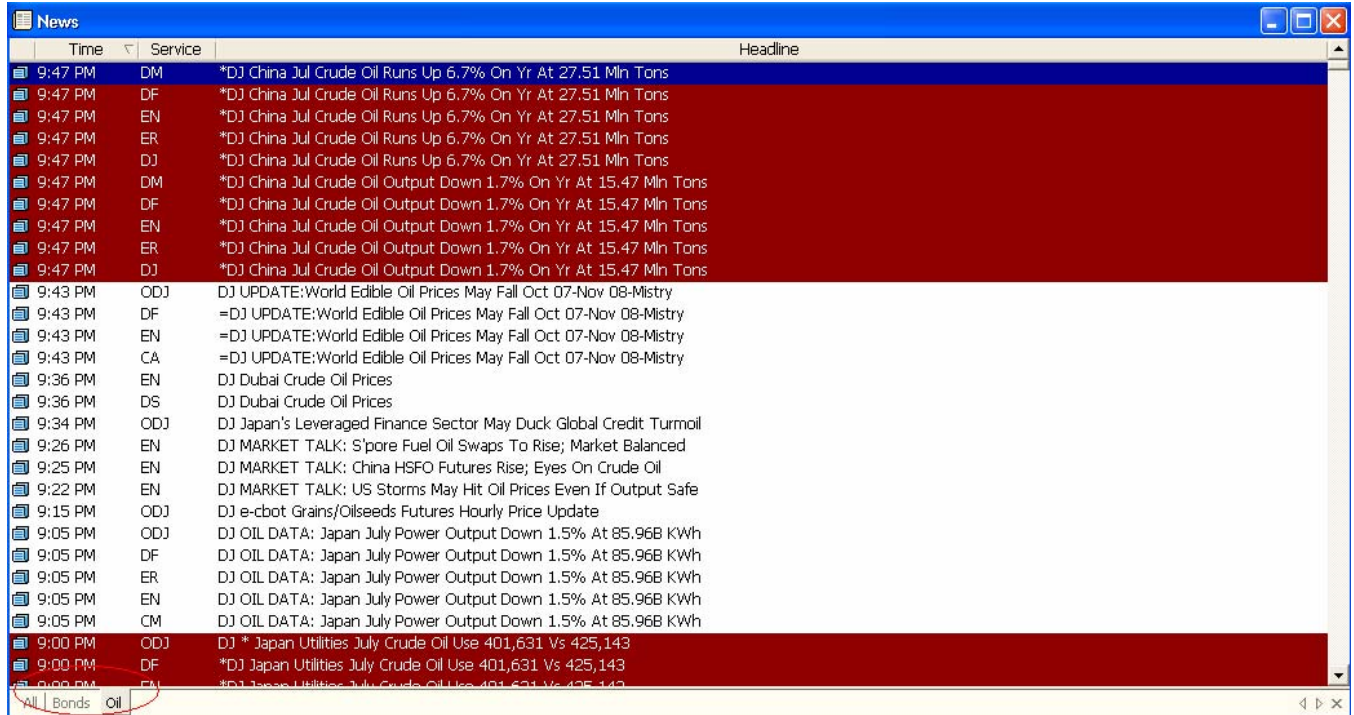
This is accomplished by the use of News Tabs.

When a new News Window is opened you will see a single page tab at the bottom of the window.

From the **Context** menu of that Tab, you will be presented with 3 choices.

Version	Date
FutureSource Workstation 3.00	September 25, 2007

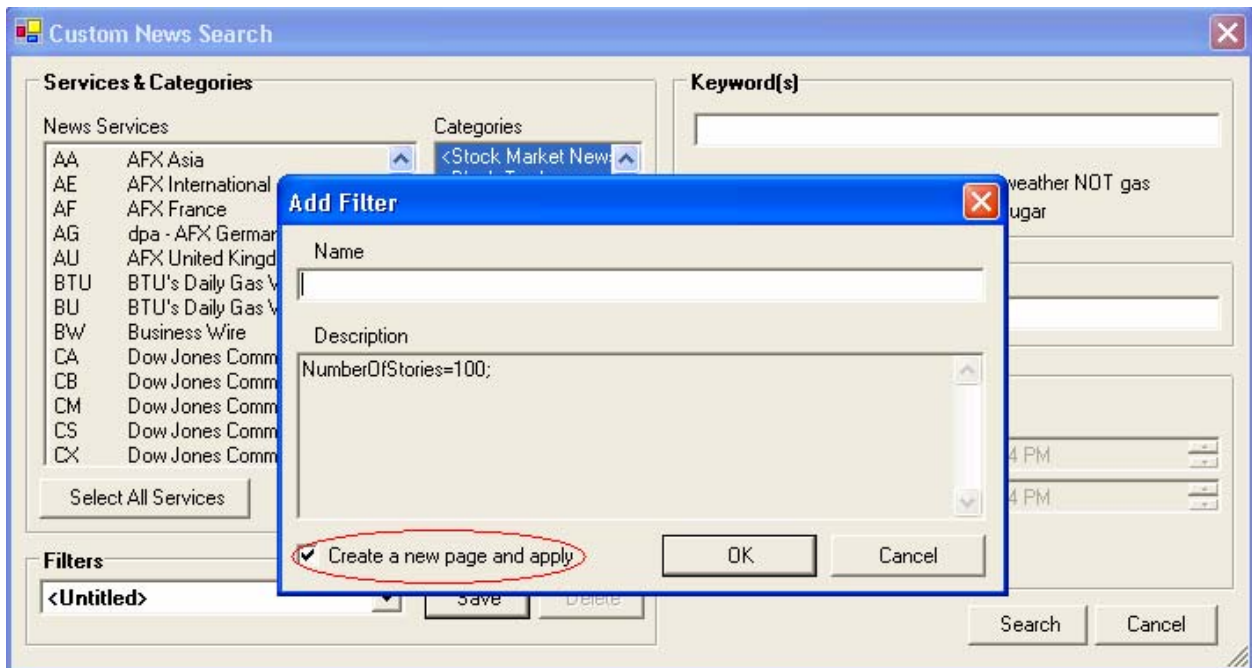
Tab Options	
Add Tab	Creates new screen within the single News Window
Rename Tab	Allows for renaming of tab for ease of use
Delete Tab	Removes the screen from the News Window



In the example above I have 3 Scrolling News Pages within the single News Window.

Once you have added a new News Page you can assign a saved Filter to that tab. When you are creating your news filters you may have the window automatically create an additional tab automatically by selecting the check box labeled "Create new page and apply" from within the save filter dialog.

Version	Date
FutureSource Workstation 3.00	September 25, 2007



OptionSource Enhancements

DDE capabilities

DDE capabilities is now available within OptionSource

After selecting the cells you wish to link to excel, you choose a DDE Option.

From the **Context** menu, you have 3 Options.

DDE Options	
Copy as Text	Copies the Cells as Plain text
Copy as DDE Link	Creates just the DDE Link to the cells
Copy as DDE Link with Headers	Creates new group to the right of the selected group

Note: Once DDE Links are created from OptionSource, Portfolio Changes are not dynamic within Excel. Real-time Values and Prices are dynamic, but not user defined Changes.

Weather Analysis Offerings

Workstation now has a 5th Weather Services Package. This package contains 84 Animated Metro, Regional and Canadian Radar Maps.

The last page of this document contains a list of all Weather Maps available.

Version	Date
FutureSource Workstation 3.00	September 25, 2007

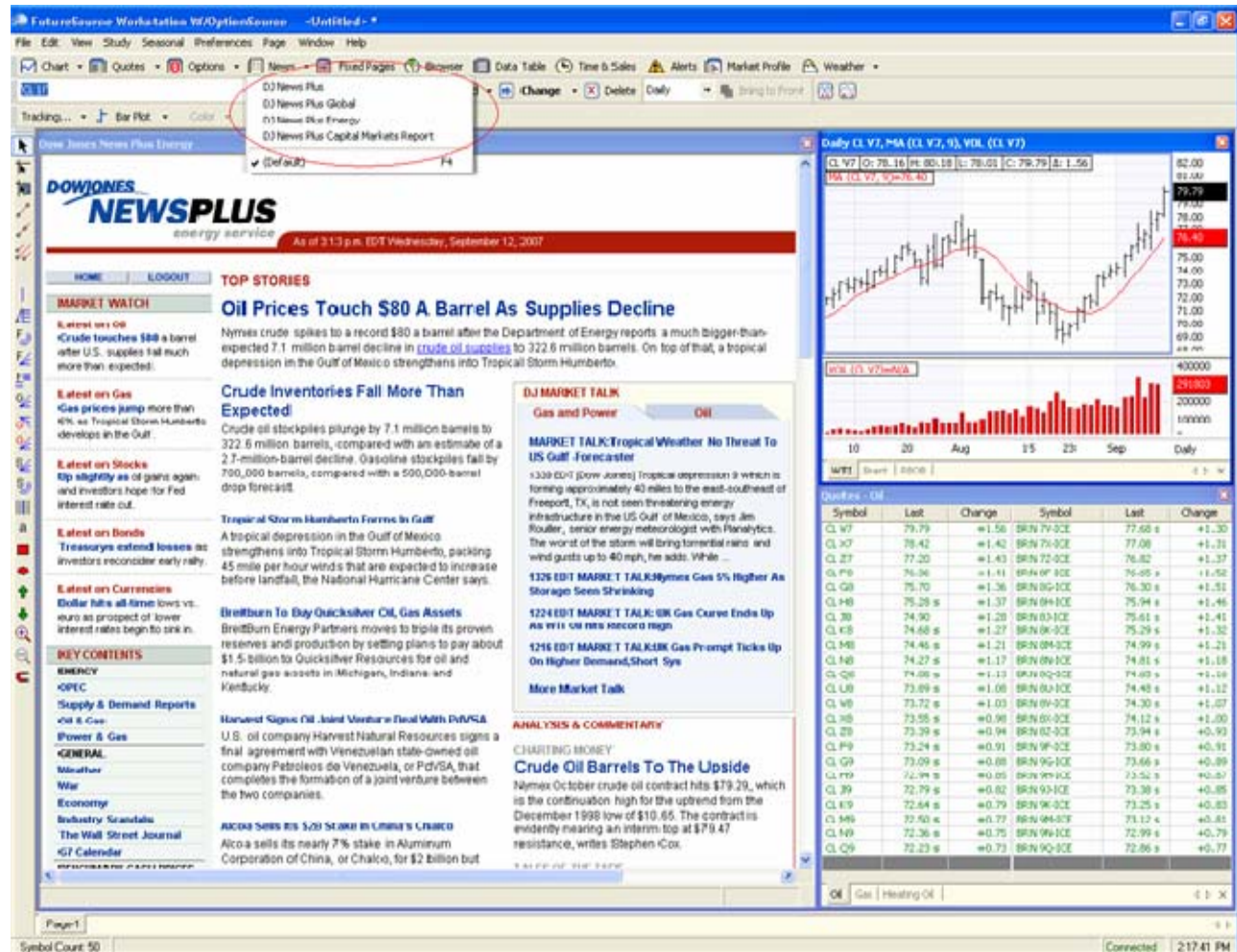
News Service Offerings

Workstation now offers 4 additional News Services provided by Dow Jones.

- Dow Jones News Plus
- Dow Jones News Plus Global
- Dow Jones News Plus Energy
- Dow Jones News Plus Capital Markets Report

These services are web based and will open inside a Workstation embedded browser.

From the **News Button** on the Main Toolbar, Select the **Drop Down** and choose the service.



Version	Date
FutureSource Workstation 3.00	September 25, 2007

Performance Improvements & System Requirements Changes

Numerous improvements have been made within Workstation to further create a better user experience.

Historical Data Requests

Data Requests for History are now returned in a timelier manner.

Memory Foot Print

System Memory usage is much lower than previous versions

Intraday Charts

Increased responsiveness when using multiple Intraday Charts with same symbol, yet different aggregation per window.

New System Requirements

Minimum	Recommended	Power User
1.2 GHz Pentium IV or greater	2.0 GHz Pentium IV or greater	2.8 GHz Pentium IV or greater
1GB of RAM or higher	1GB of RAM or higher	1GB of RAM or higher
100MB of hard drive space	100MB of hard drive space	100MB of hard drive space
1024x768 or higher screen resolution	1024x768 or higher screen resolution	1024x768 or higher screen resolution

Available Workstation Weather Map Add-on Services as of June 2007

Complete Radar Package - (84 Maps)

Metro U.S. Radar	Regional U.S. Radar	Canada Radar & Precipitation
AR Camden	AZ Prescott	Canadian National
AZ Flagstaff	CA Bakersfield	British Columbia
AZ Tucson	CO Denver	East Maritimes
CA Fresno	FL St. Petersburg	Quebec East Ontario
CA San Diego	GA Columbus	Manitoba West Ontario
CA Susanville	LA New Orleans	Alberta Saskatchewan
CO Eagle	MI Cadillac	Eastern Observed Precipitation
CO Kim	MN St. Cloud	Central Observed Precipitation
CT Hartford	MO Jefferson City	Western Observed Precipitation
FL Bartow	MT Lewistown	
FL Daytona Beach	NH Berlin	
FL Key west	OH Dayton	
FL Tallahassee	OK Lawton	
GA Atlanta	OR Redmond	
GA Savannah	TX San Antonio	
IA Carroll	UT Provo	
ID Idaho Falls	VA Staunton	
ID Mullan		
IL Sterling/Rock Falls		
KS Winfield		
KY Covington		
KY Jackson		
LA Houma		
ME Bangor		
MI Flint		
MI Pellston		
MN Grand Marais		
MO Saint Louis		
MO Springfield		
MS Natchez		
MT Jordan		
NC Stumpy Point		
NC Wilmington		
ND Devils Lake		
NE Imperial		
NJ Atlantic City		
NM Carlsbad		
NM Corona		
NM Farmington		
NV Caliente		
NY Syracuse		
OH Youngstown		
OK Durant		
OR Lakeview		
SD Aberdeen		
SD Philip		
TN Nashville		
TX Del Rio		
TX Galveston		
TX Plainview		
TX San Angelo		
TX Tyler		
UT Dugway		
VA Richmond		
WA Wenatchee		
WI Phillips		
WV Charleston		
WY Buffalo		

58 Metro Maps

17 Regional Maps

9 Canada Maps

US AG - (86 Maps)

Current Temperatures
Crop Moisture Index
Topsoil Moisture
Subsoil Moisture
Palmer Drought Severity Index
Current Dewpoint
Current Relative Humidity
Current Heat Index
Observed Precipitation Yesterday
Observed Precipitation Past 7 Days
Day 1 Rainfall Forecast
Day 2 Rainfall Forecast
Day 3 Rainfall Forecast
Day 4 Rainfall Forecast
Day 5 Rainfall Forecast
Day 6 Rainfall Forecast
Day 7 Rainfall Forecast
Month To Date Precipitation
% of Norm MTD Precipitation
Drought Monitor
10 Day Temperature Outlook
10 Day Precipitation Outlook
Observed High Temps
Observed Low Temps
Todays Max Temp Forecast
Tomorrows Max Temp Forecast
Day 3 Max Temp Forecast
Day 4 Max Temp Forecast
Day 5 Max Temp Forecast
Day 6 Max Temp Forecast
Day 7 Max Temp Forecast
Tomorrows Min Temp Forecast
Day 3 Min Temp Forecast
Day 4 Min Temp Forecast
Day 5 Min Temp Forecast
Day 6 Min Temp Forecast
Day 7 Min Temp Forecast
Current Wind Chill
6 Day Precipitation Forecast
30 Day Forecast
90 Day Forecast
Jet Stream
2 Day Jet Stream
Current Wind Gusts
Current Wind Speed
Current Wind Direction
Tropical Satellite Image
Satellite Image
Radar
Northwest Radar
North Central Radar
Northeast Radar
Southwest Radar
Central Radar
East Central Radar
South Central Radar
Southeast Radar
US Seasonal Drought Outlook
Palmer (long term) Drought Monitor
Crop (short term) Moisture Index
7-day Total Precipitation Through Last Saturday
7-Day Average Temperature Anomaly Through Last Saturday
7-Day Extreme Maximum Temperature Through Last Saturday
7-Day Maximum Apparent Temperature (Heat Index) Through Last Saturday
U.S. Climate at a Glance
Keith-Byram Drought Index (Updated Daily)
Soil Moisture - Most Recent Day
Soil Moisture - Most Recent Month
Soil Moisture - Most Recent 12 Months
Soil Moisture Anomaly - Most Recent Day
Soil Moisture Anomaly - Most Recent Month
Soil Moisture Anomaly - Most Recent 12 Months
Soil Moisture Percentiles - Most Recent Day
Soil Moisture Percentiles - Most Recent Month
Soil Moisture Percentiles - Most Recent 12 Months
Soil Moisture Climatology - Monthly
Soil Wetness Climatology - Monthly
Soil Moisture Animated Loop
Evaporation - Current Month
Evaporation - Most Recent 12 Month
Evaporation Anomaly - Current Month
Evaporation Anomaly - Most Recent 12 Months
Evaporation Percentiles - Most Recent 12 Month
Monthly Climatology Evaporation
Experimental Short-Term Blends
Experimental Long-Term Blends

US Energy - (45 Maps)

Current US Temperatures
US Observed High Temps
US Observed Low Temps
Today's US Max Temp. Forecast
Current US Relative Humidity
Current US Heat Index
Current US Wind Chill
US CDD Day 1
US CDD Day 2
US CDD Day 3
US CDD Day 4
US CDD Day 5
US CDD Day 6
US CDD Day 7
US CDD Deviation Day 1
US CDD Deviation Day 2
US CDD Deviation Day 3
US CDD Deviation Day 4
US CDD Deviation Day 5
US CDD Deviation Day 6
US CDD Deviation Day 7
US HDD Day 1
US HDD Day 2
US HDD Day 3
US HDD Day 4
US HDD Day 5
US HDD Day 6
US HDD Day 7
US HDD Deviation Day 1
US HDD Deviation Day 2
US HDD Deviation Day 3
US HDD Deviation Day 4
US HDD Deviation Day 5
US HDD Deviation Day 6
US HDD Deviation Day 7
Tropical Satellite Image
Satellite Image
Radar
Northwest Radar
North Central Radar
Northeast Radar
Central Radar
East Central Radar
South Central Radar
Southeast Radar

Europe Energy - (45 Maps)

Current Temps
Todays Low
Todays High
HDD Day 1
HDD Day 2
HDD Day 3
HDD Day 4
HDD Day 5
HDD Day 6
HDD Day 7
CDD Day 1
CDD Day 2
CDD Day 3
CDD Day 4
CDD Day 5
CDD Day 6
CDD Day 7
Forecast Highs Day 1
Forecast Highs Day 2
Forecast Highs Day 3
Forecast Highs Day 4
Forecast Highs Day 5
Forecast Highs Day 6
Forecast Highs Day 7
Forecast Lows Day 1
Forecast Lows Day 2
Forecast Lows Day 3
Forecast Lows Day 4
Forecast Lows Day 5
Forecast Lows Day 6
Forecast Lows Day 7
Forecast Rainfall Day 1
Forecast Rainfall Day 2
Forecast Rainfall Day 3
Forecast Rainfall Day 4
Forecast Rainfall Day 5
Forecast Rainfall Day 6
Forecast Rainfall Day 7
Month To Date Rainfall
Month To Date Percent Of Normal Rainfall
Europe satellite Image
Europe Jet Stream
Europe 2 Day Jet Stream
Europe 10 Day Temperature Outlook
Europe 10 Day Precipitation Outlook

South America - (40 Maps)

Brazil Latest Temps
Brazil 10 Day Outlook
Brazil High Temps
Brazil Low Temps
Brazil Day 1 Low Temp. Forecast
Brazil Day 2 Low Temp. Forecast
Brazil Day 3 Low Temp. Forecast
Brazil Day 4 Low Temp. Forecast
Brazil Day 5 Low Temp. Forecast
Brazil Day 6 Low Temp. Forecast
Brazil Day 7 Low Temp. Forecast
Brazil Day 1 High Temp. Forecast
Brazil Day 2 High Temp. Forecast
Brazil Day 3 High Temp. Forecast
Brazil Day 4 High Temp. Forecast
Brazil Day 5 High Temp. Forecast
Brazil Day 6 High Temp. Forecast
Brazil Day 7 High Temp. Forecast
Brazil Observed Rain Yesterday
Brazil Observed Rain Past 7 Days
Brazil Rain Day 2
Brazil Day 1 Precipitation Forecast
Brazil Day 2 Precipitation Forecast
Brazil Day 3 Precipitation Forecast
Brazil Day 4 Precipitation Forecast
Brazil Day 5 Precipitation Forecast
Brazil Day 6 Precipitation Forecast
Brazil Day 7 Precipitation Forecast
Brazil Month To Date Precipitation
Brazil % Of Norm MTD Precipitation
Brazil Topsoil Moisture
Brazil Subsoil Moisture
Columbia Observed Rain Yesterday
Columbia Observed Rain Past 7 Days
Columbia Month To Date Precipitation
Columbia % Of Norm MTD Precipitation
Columbia High Temps
Columbia Low Temps
Month To Date Rainfall
Columbia Topsoil Moisture
Columbia Subsoil Moisture