

Version	Date
FutureSource Workstation 3.21	Sept 12, 2008

Workstation 3.21

Maintenance Release



Release Notes
09/12/08

Version	Date
FutureSource Workstation 3.21	Sept 12, 2008

New Season Strip Functions

Workstation now supports additional ways to retrieve standard Winter, Summer and Annual Strips. Users can now use a dynamic shortcuts that change as Contracts Expire and Drop off the strip, removing the need to update expressions each month.

Strip Definitions:

- Summer – J, K, M, N, Q, U, V
- Winter – X, Z, F, G, H
- Annual – F, G, H, J, K, M, N, Q, U, V, X, Z

All strips are based on Active Contracts.

Syntax:

Strips can be used in any Quote Board, Chart or Data Table. Syntax is:

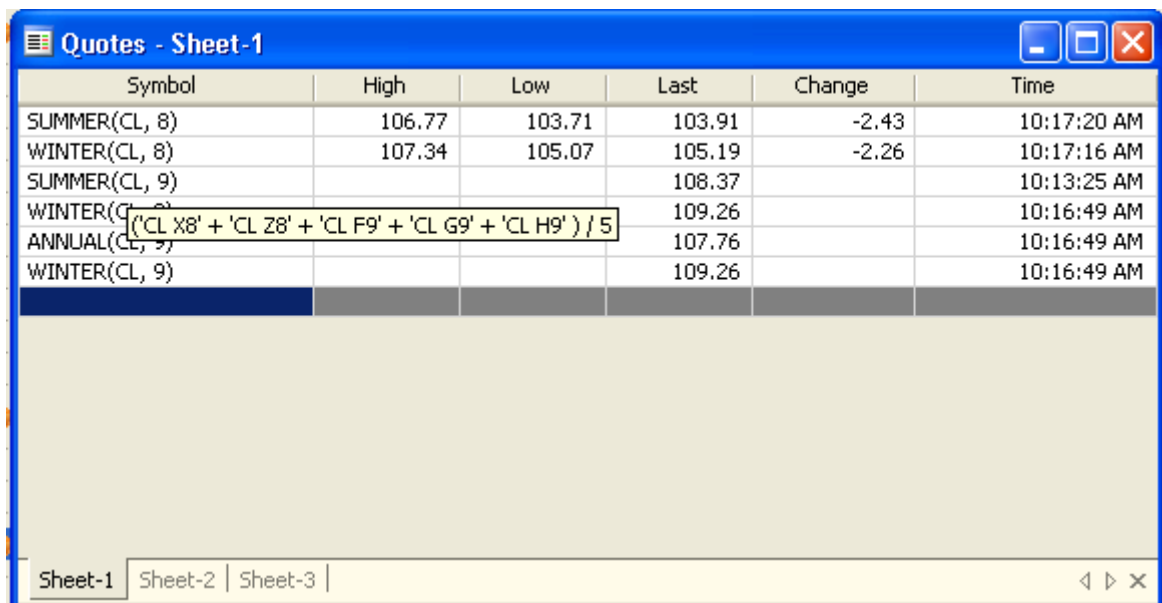
```
=StripName(Symbol, Year) ... =Summer(CL, 09)
```

Strip Behavior:

The Strip functions are Dynamic in that they include only those contracts that are Still Active. So at any given time when you bring up the Strip, it will only include those which are still active. You can leave them in your Workspace, and they will automatically change when another contract expires and drops off.

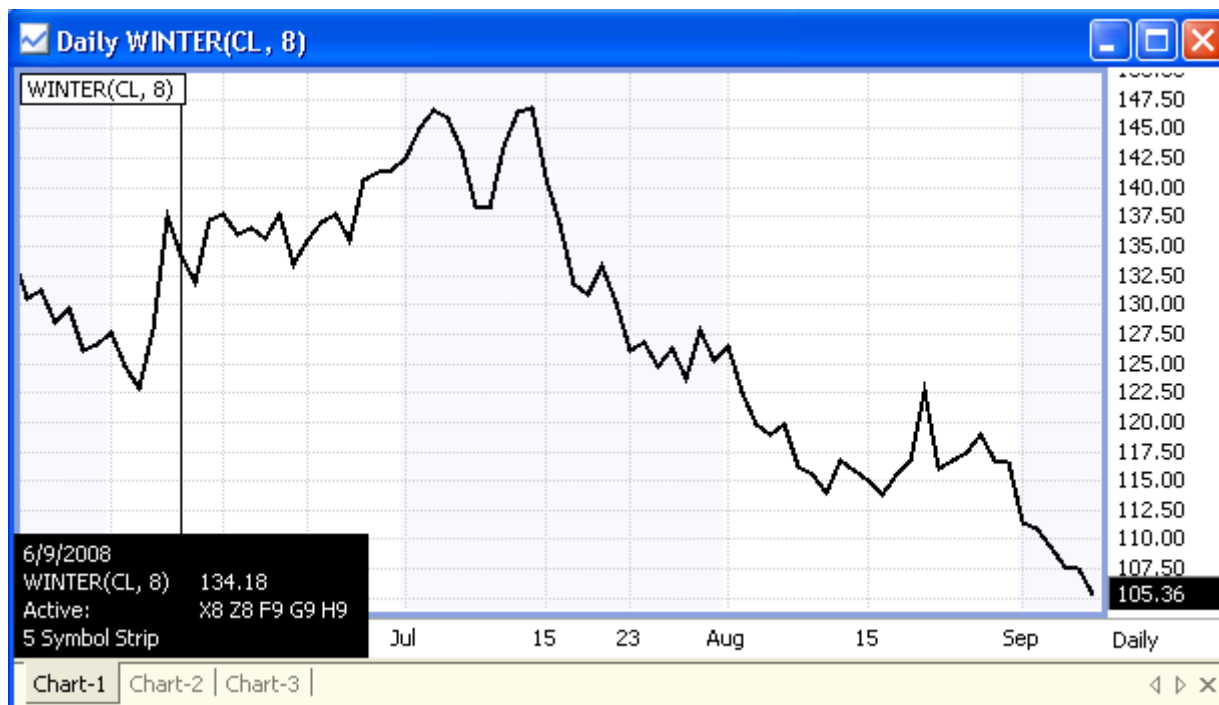
Strips can be display in a Quote Board, Chart or Data Table.

To view properties of the Strip in a Quote Board, move the mouse over the symbol field:



Version	Date
FutureSource Workstation 3.21	Sept 12, 2008

To view properties of the Strip in a Chart, use the data view window:



RSS Reader Window

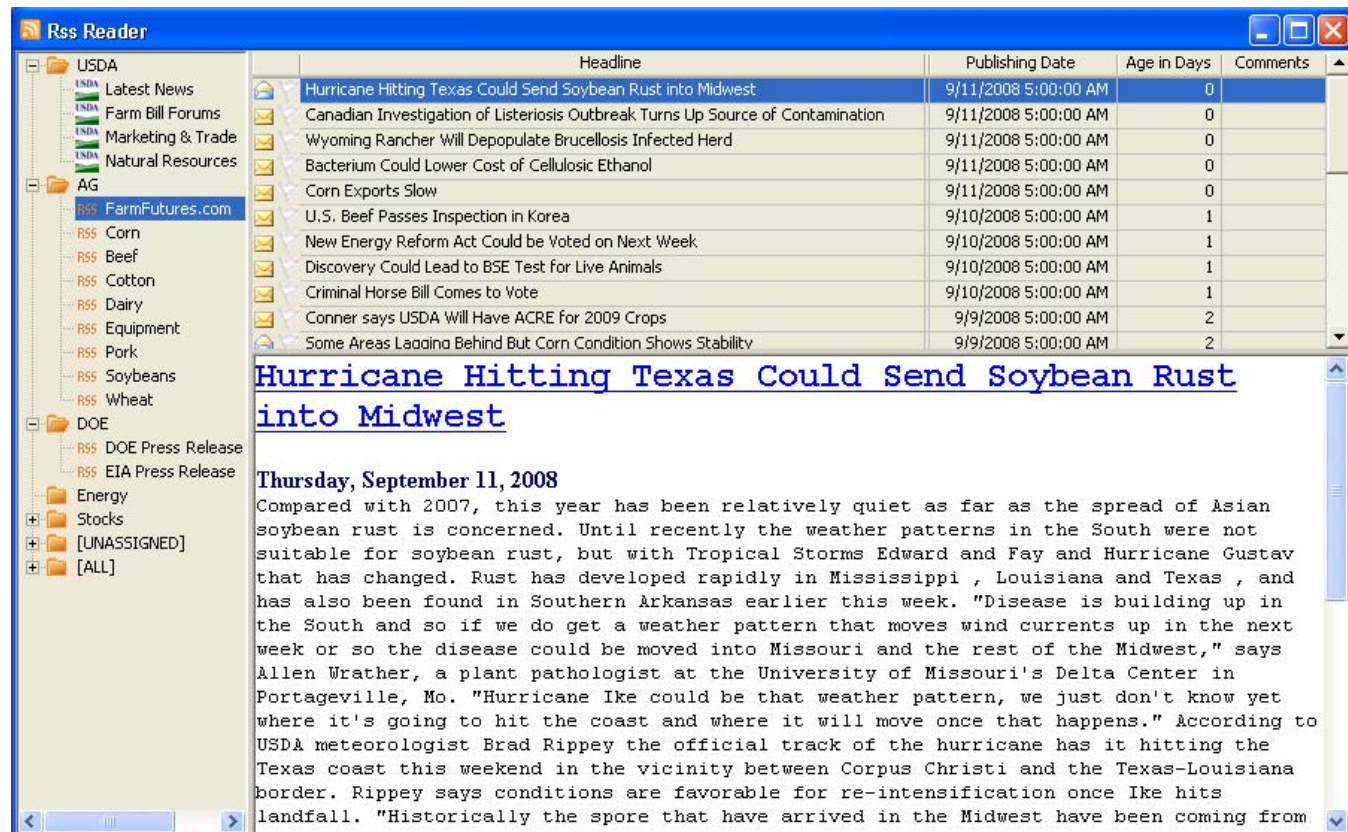
Workstation now includes a RSS Reader Window, allowing you to view additional news feeds within your Workstation Workspace.

Click the **RSS Reader Button** from the **Toolbar**

Or

From the **File Menu** and then **New RSS Reader Window**

Version	Date
FutureSource Workstation 3.21	Sept 12, 2008



Available Column Headings

There are 13 different column headings available with the RSS Window. Not all RSS Feeds will provide data for each column, as each Feed varies.

To access available columns, **Right Click** RSS Window and select **Delete** or **Insert Column**

Available Columns:

- Headline
- Topic
- Publishing Date
- Age In Days
- Comments
- Link
- Description
- Author
- Guid
- Read
- Flag
- Time Stamp
- Feed Title

Version	Date
FutureSource Workstation 3.21	Sept 12, 2008

Toolbar Options



Toolbar Buttons	
	Add New RSS Category
	Edit Selected RSS Category
	Delete Selected RSS Category
	Add New RSS Feed
	Edit Selected RSS Feed
	Delete Selected RSS Feed
	Refresh All RSS Feeds
	Refresh Selected RSS Category
	Refresh Selected RSS Feed
	Preview Window shows Description (w/link for Full Story)
	Preview Window show Full Story
	Show only Unread Stories
	Show only Flagged Stories
	Show Number of Days. -1 Indicates you want all stories showing.

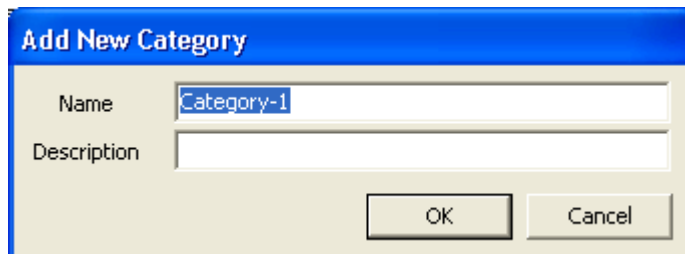
Add New Category

RSS Feeds can be grouped into Categories.

Click the **ADD Category Button** from the **Toolbar**

Or

Right Click the **Directory Listing** and select **Add New Category**



There are 2 default categories, **All** and **Unassigned**. Neither of these can be deleted. All will show you a complete list of all Feeds in one spot. Unassigned will be where feeds will default to if no category is assigned.

Version	Date
FutureSource Workstation 3.21	Sept 12, 2008

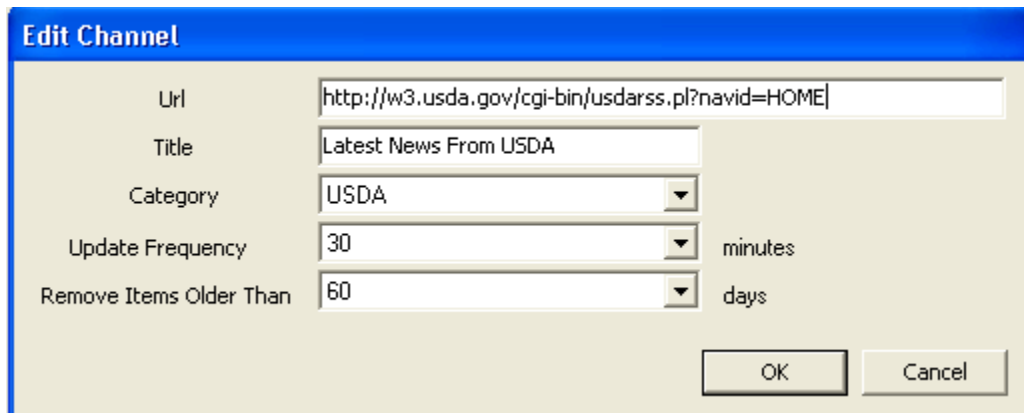
Fields	
Name	Name of Category
Description	Description of Category Contents

Add New Feed

Click the **ADD RSS Feed Button** from the **Toolbar**

Or

Right Click the **Directory Listing** and select **Add New Feed**

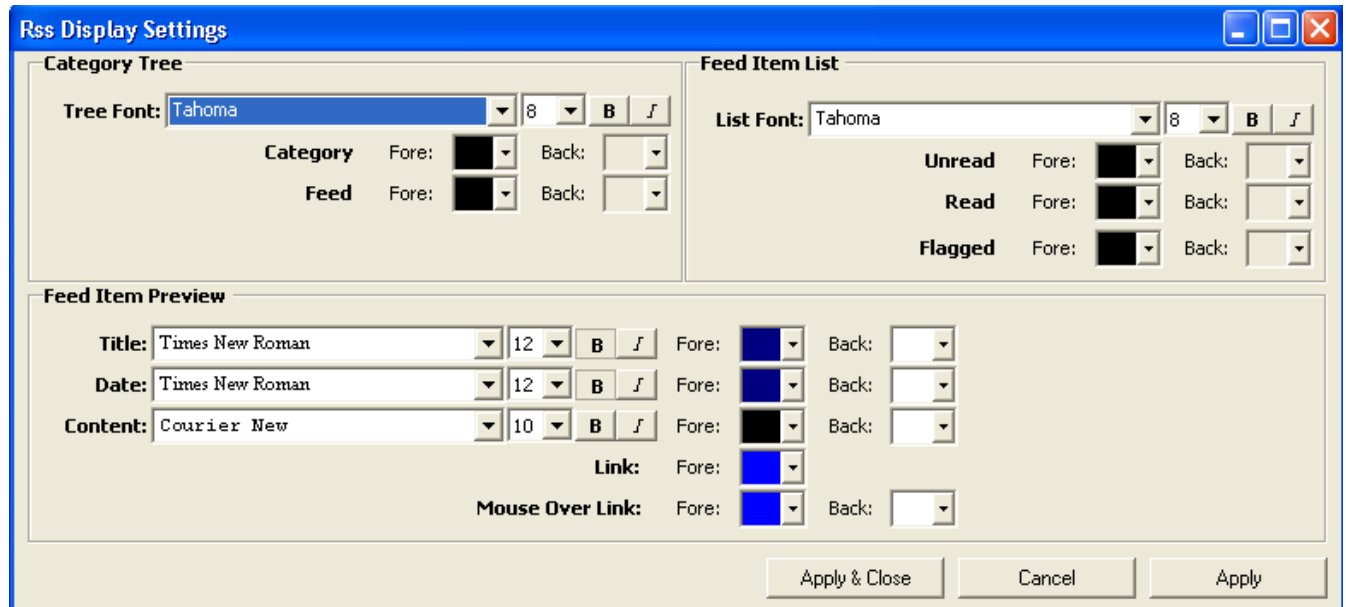


Fields	
URL	URL for the Given Feed
Title	Title given to Feed
Category	Category Feed is assigned to
Update Frequency	Time internal to check for new stories
Remove Items Older than	Amount of History to view

Window Display Settings

To bring up Display **Settings**, Right Click anywhere on the window and select **Display Settings**

Version	Date
FutureSource Workstation 3.21	Sept 12, 2008



Performance Improvements

Numerous performance improvements have been made within Workstation to provide a better user experience. Numerous Bug fixes and improved Stability have also been addressed.

Workstation 3.21 System Requirements (Un-Changed from 3.20)

Recommended

- 2.0 GHz Pentium IV or greater
- 1GB of RAM or higher
- 100MB of hard drive space
- 1024x768 or higher screen resolution

Preferred

- Dual Core Processor – 2.0 Ghz or Better
- Suggested
- 2 GB of RAM or higher
- 100MB of hard drive space
- 1024x768 or higher screen resolution